

Thank you for using eradoc, a platform to publish electronic copies of the Rothamsted Documents. Your requested document has been scanned from original documents. If you find this document is not readable, or you suspect there are some problems, please let us know and we will correct that.



ROTHAMSTED
RESEARCH

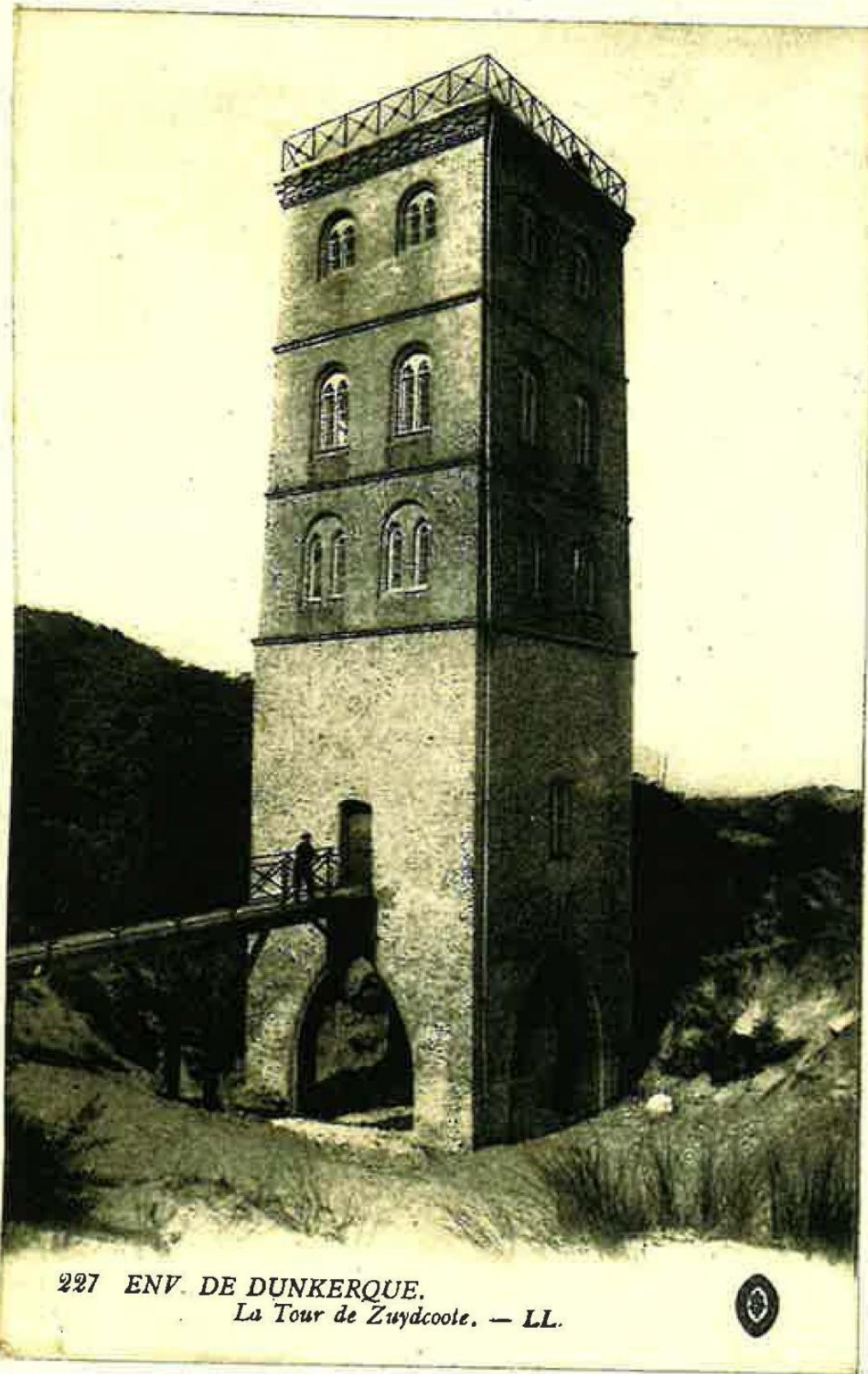
Tattersfield Notebook 1

[Full Table of Content](#)



227 - Env - De Dunkerque - La Tour De Zuydcoote

227 - Env - De Dunkerque - La Tour De Zuydcoote, Rothamsted Research (1917) Tattersfield Notebook 1, pp 68aL - 68aL



227 ENV. DE DUNKERQUE.
La Tour de Zuydcoote. — LL.



A landmark up the coast towards Newport
6th May - an extraordinary clear day.
This was very clearly seen.