

Thank you for using eradoc, a platform to publish electronic copies of the Rothamsted Documents. Your requested document has been scanned from original documents. If you find this document is not readable, or you suspect there are some problems, please let us know and we will correct that.



ROTHAMSTED
RESEARCH

John Bennet Lawes Ledger 1

[Full Table of Content](#)



Rothamsted Farm Accounts, Stock Lists and Valuations, 1847 - 52

Rothamsted Farm Accounts, Stock Lists and Valuations, 1847 - 52, (1847-71) John Bennet Lawes Ledger 1, pp 384 - 402

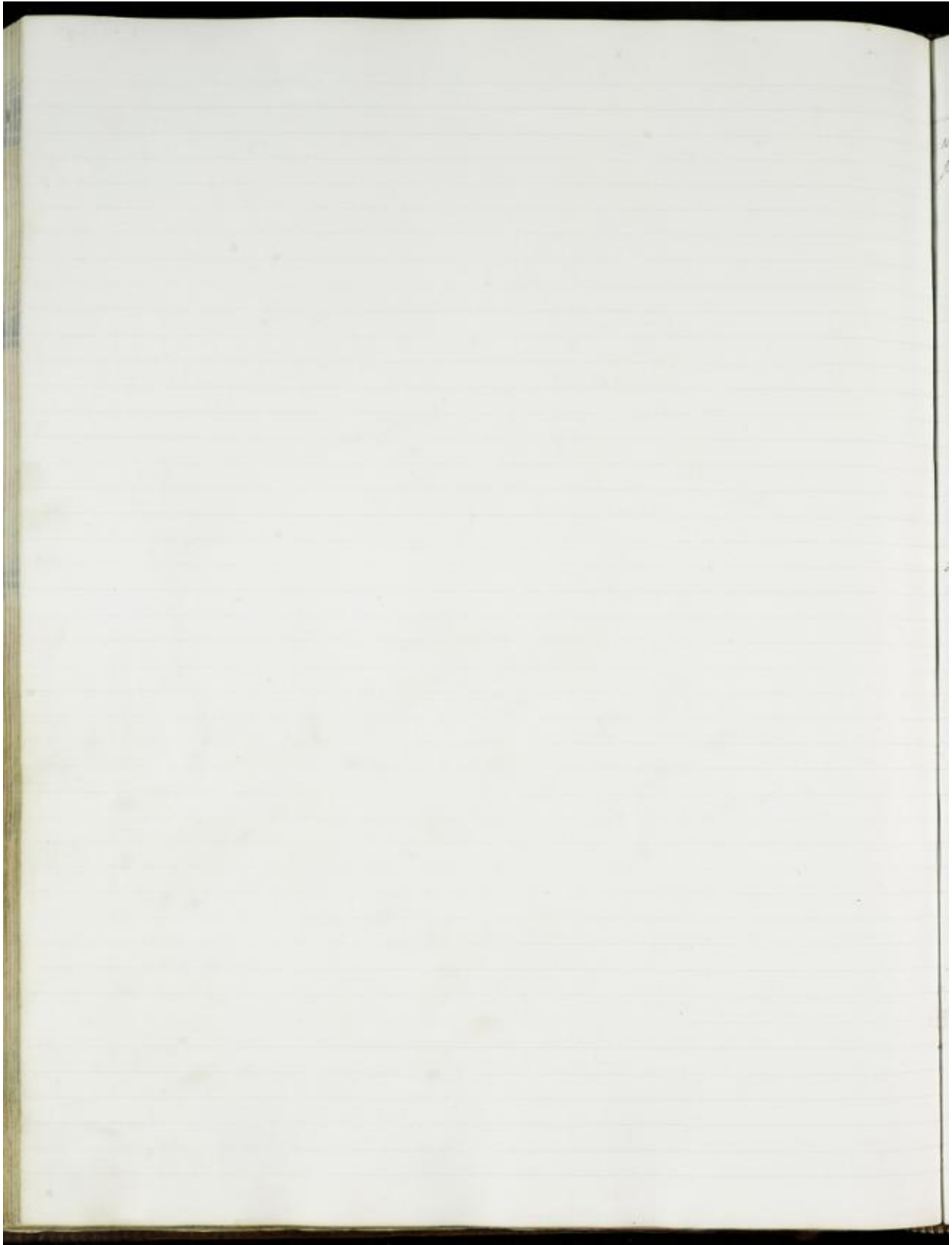
J. B. Lewis account with Rothamsted Farm 1847

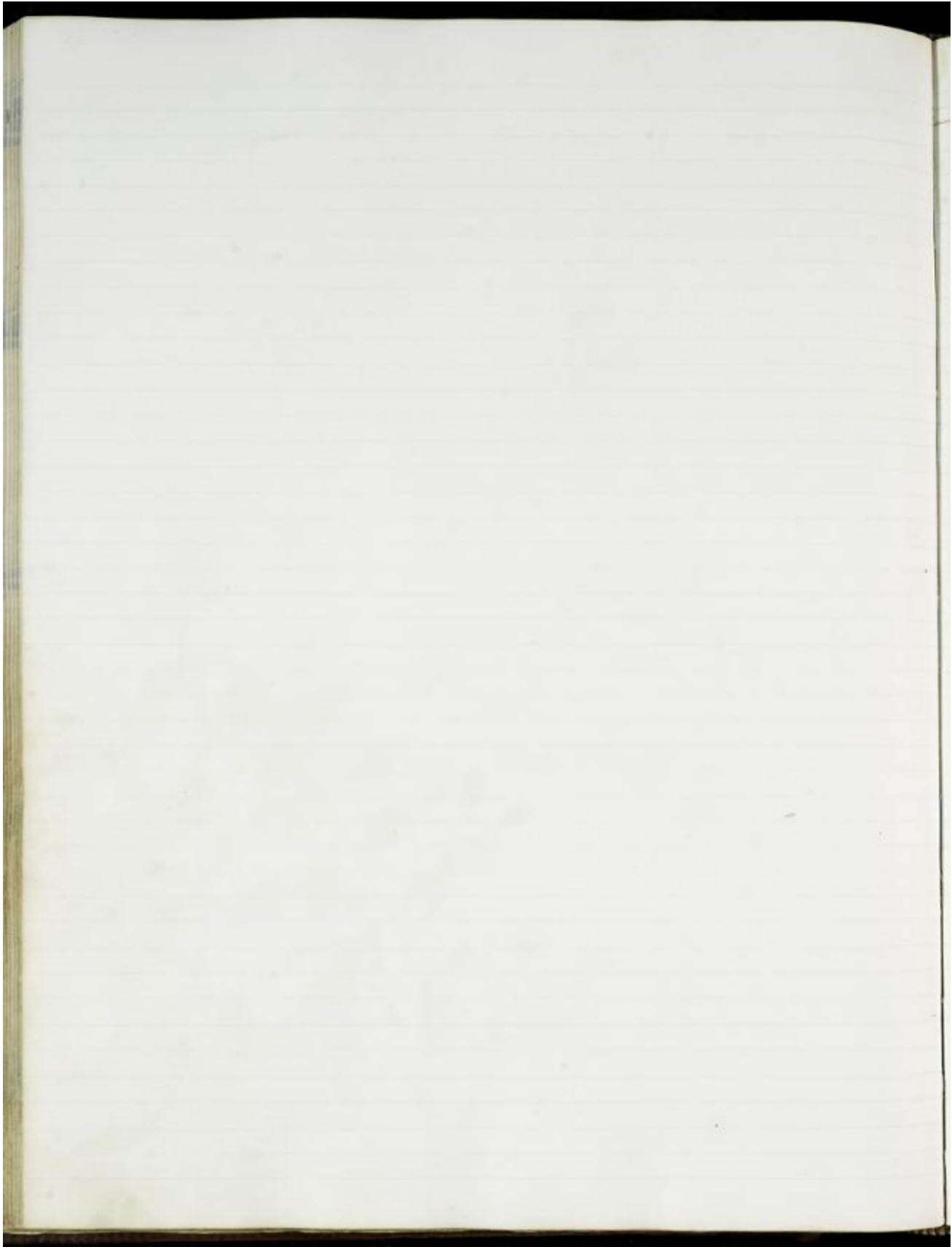
January	Payments	L s d			January			Receipts	L s d		
30 th	Wm Low - check	50									
1 st	Wm Low - check	10									
	From labor				7						44
7 th		19	11	6			10				54
15 th		33	5	11			20				74
21 st		20	0				20	10	0	0	94
28 th		20	0				2	10	0	0	100
31 st		17	10	6	17	10	6				117
	Balance at year				4	10	6				122
		2	0								124
	Balance in August 1846	174	14	7							298
	10th interest	22	10	11							320
	Balance at 1st of 1847	7	0								327
		207	0	6							434
1 st	Lab	13	10	6			1	10	0		444
1 st	Lab Payment				17	10	0				461
18 th	Lab	10	0	0							471
	Lab out of year				2	10	6				473
21 st	Lab	12	0	11							485
	Other Payment				17	0					502
	Lab out of year				10	0					512
					10	0					522
Feb 5 th	From Lab	10	10	0			2	0			524
	Other Payment				4	0					528
	From Lab				7	0					535
	From Lab				0	0					535
9 th	From Lab	26	0	0							561
	Other Payment				10						571
	From				0						571
Feb 11 th	From Lab	17	0	0							588
	Other Payment				11	0					599
	From				1	11					610
											610
											610
21 st	From Lab	21	0								631
28 th	From Lab	11	10	0							642
	From Payment				11	0					653
	From				1	0					654
		366	10	6	71	0	10				725
											725

Location of tree measured in hours				Went		Back		Dist.	
Day	Time	Lat	Long	Start	End	Start	End	From	To
August 11 th	10	42°	120°	9	10	10	11	10.0	11.0
12 th	10	42	120	10	11	11	12	11.0	12.0
13 th	10	42	120	11	12	12	13	12.0	13.0
14 th	10	42	120	12	13	13	14	13.0	14.0
15 th	10	42	120	13	14	14	15	14.0	15.0
16 th	10	42	120	14	15	15	16	15.0	16.0
17 th	10	42	120	15	16	16	17	16.0	17.0
18 th	10	42	120	16	17	17	18	17.0	18.0
19 th	10	42	120	17	18	18	19	18.0	19.0
20 th	10	42	120	18	19	19	20	19.0	20.0
21 st	10	42	120	19	20	20	21	20.0	21.0
22 nd	10	42	120	20	21	21	22	21.0	22.0
23 rd	10	42	120	21	22	22	23	22.0	23.0
24 th	10	42	120	22	23	23	24	23.0	24.0
25 th	10	42	120	23	24	24	25	24.0	25.0
26 th	10	42	120	24	25	25	26	25.0	26.0
27 th	10	42	120	25	26	26	27	26.0	27.0
28 th	10	42	120	26	27	27	28	27.0	28.0
29 th	10	42	120	27	28	28	29	28.0	29.0
30 th	10	42	120	28	29	29	30	29.0	30.0

Rothamsted Farm.

Date	Payments			Receipts			Balance
	£	s	d	£	s	d	
	Brought forward from last page August 1 st & 11th 18 th						
	306	11	6				
	from August 1 st & 11th 18 th						
	59	7	9				
	like at 10						
	11	7	1				
1 st	from 10						
	12	2	8				
	from 10						
	10	1	0				
	at 10						
	8						
15 th	from 10						
	14	1	6				
	from 10						
	1	4	10				
20	from 10						
	14	10	2				
	like at 10 (10/10)						
	7	0	0				
27	from 10						
	9	10	6				
	like at 10						
	3	0	6				
	from 10						
	3	6	10				
2	from 10						
	11	17	4				
	like at 10						
	2	12	6				
	from 10						
	7						
11 th	from 10						
	11	2	11				
	like at 10						
	1	16	5				
	from 10						
	8						
	at 10						
	4	4					
	at 10						
	3	0					
17 th	from 10						
	14	17					
17	from 10						
	13	8	6				
	like at 10						
	1	2					
	from 10						
	11	6					
25 th	from 10						
	13	1	11				
	like at 10						
	1	9	11				
	from 10						
	1	2	6				
31	from 10						
	12	16	10				
	like at 10						
	1	0	4				
	from 10						
	4	1					





Stock on Pittmansted Farm August 1st 1898

Binding Lines	260	18	35	£ 188
Sitting Lines	85	27	25	22.14
Low Seats	111	27	25	130.14
Back Seats	124	27	25	102.10
Back Seat	100	27	25	372
Back Seat	9	27	25	24
Ben	4	27	25	24
Four Masses	12	27	25	120
Car	2	27	25	48
Chair	2	27	25	10
Box	2	27	25	10

Standing Cows	85	27	25	210
10	27	25	22	
20	27	25	15	
5	27	25	50	
74	27	25	212	
			£ 1329	

Capital on Farm August 1st £ 4720

Wool	7 Dec	27	25	65
Wool	27 Dec	27	25	372
Wool	117 Dec	27	25	175
Wool	27 Dec	27	25	40
Wool	11 Dec	27	25	76
Wool	2 Dec	27	25	6
Wool	30 Dec	27	25	1227

745 Sheep	1242
46 Horse Cows & Pigs	222
Back Seat	1928
	<u>3391</u>

Payments *Rothamsted Farm* August 1876

Payments		Receipts		Total	
Date	Description	£	s	£	s
1	1 week's lab	57	12 11		
12	do	57	16 2 1/2		
19	do	28	10 2		
26	-	61	4 11		
Sept 2	-	24	3 10		
9	-	19	7 11		
16	-	52	11 6		
23	-	11	11 10		
30	-	15	7 2		
See by acct for Sept 1 st & Oct 1 st				24	1 6

At first the studies of both in the line of the same 25° on the slope of the mountain

Very good of the production in terms for August 1st & October 21st 1852-70

at	August 1 st	12.7.9 ¹
at	October 21 st	11
		1852-70

Payments

Receipts

Payments			Receipts		
Jan		\$	Jan		\$
2 ^d	W. Bond	10	8 ^d	R. J. D. Bond	10
5	W. Bond	15	11	" " "	1
11	W. Bond	16	18	R. J. D. Bond	6
18	W. Bond	15	20	am	
25	W. Bond	11	25	am	
			31	am	

Stick at Rathamsted farm July 25th 1864.

12	Horses valued at	£ 216. 10
12	cow and calves	£ 121. 6
205	breeding hens at 30 th	£ 350. 18
110	- do at 25	250.
35	fatter hens at 20 th	£ 67. 10
101	lay eggs at 20 th	£ 161. 10
7	land sops at 20 th	£ 14. 10
258	laid sops at 25 th	£ 163. 18
110	lay sops at 20 th	£ 95.
1	Sops	£ 10
3	hobby sops at 25	£ 12
Total Stock 1864 value 1864		
20	Pigs	£ 11. 10
		£ 1029. 16

Feed Stock

Lois Stock as Bookkeeper from January 1, 1851.

16	Bullocks	25	80
18	Beams	24	135
19	Horns	12.0	150
6	Wax	11	80
18	1st Lys		1.57
25	do do		20
	See Am. m. l. p.		22
256	Lois	35	62.3
116	Am. Lys	20	1.62
29	2d Lys	15	25
102	2d Lys	10	2.15
50	W. Lys	35	70
110	Beams	30	80
50	Man/ches	35	66
6	Sal.	4	32
670			1077

of book given to Amos. later.

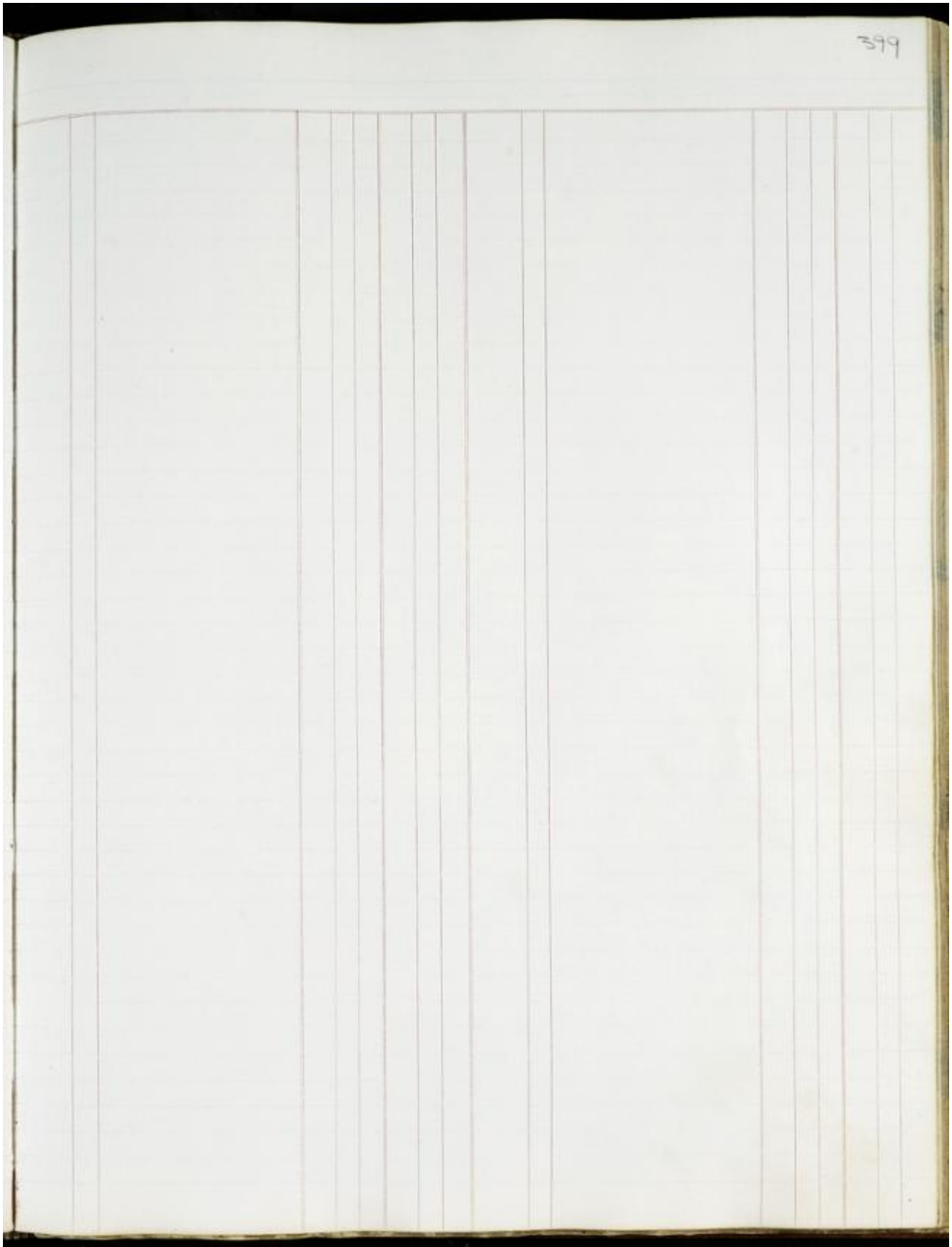
January 1 1851 to 1851	2116
Wells p. 31. 1/2	270
Wells	104
Wells	11. 7. 1/2
Wells	0. 8. 1/2
	<hr/> 2341. 15. 2

part paid over by Amos.

Beams	570	10. 7.
Sal.	272	5. 6.
Amos	110	2. 2.
	1222	16. 5.
Wells & Co. Prescott	564	1. 10.

Settlement	250
Wells 70 Beams 250	500
Beams 10	4
Wells 10	1. 10. 2.
Lois 4	20
Wells 25	1. 68
Wells	232
Wells 22 1/2	58
Beams 10 1/2	86. 10
Wells 10 1/2	62
Wells 10 1/2	11. 97. 10
	1077
	<hr/> £ 2570. 10

1851 (of 1854)



Valuation of Stock upon Reformation from January 1st 1852

Live Stock	1512
Implements	260
Wheat 1844	56
do 1850	546
do 1851	1197
Barley	180
Wheat 1844	243
Wheat 1845	30
Wheat 1846	228
Wheat 1847	294
Wheat 1848	50
	£ 6456

Valuation of Live and dead Stock

January 1 st 1881	£	s	d
Live Stock	1077		
Implements	230		
Labour	661	19	
corn, cake, straw &c	539	19	
Live Stock 1 st	239	1	
Wool and Dye St	69	7	6
Seed corn	12		
Small cattle	14		
Wages, seasonal	52		
112 acres of Wheat straw	336		
16 acres Straw	48		
Wool of 1 acre of Wheat	201		
Hay	235		
Hay bought	31	10	
Carriage of Horse Man	69	1	6
Wool of 100 lbs of Wool	160		
Sub of one year in the	173	15	
	5937	13	

670 9 6
~~674 19 6~~

January 1 st 1882	£	s	d
Live Stock	1312		
Implements	260		
133 acres Wheat	1197		
21 acres Barley	160		
15 Acre of Potatoes	105		
Wool	105		
Hay	290		
Live Stock 1 st	1641		
Hay 1 st	29	17	
Wool of 100 lbs of Wool	149		
Wool of 100 lbs of Wool	71		6
Wool of 100 lbs of Wool	55	14	
Wool of 100 lbs of Wool	53	11	
Wool of 100 lbs of Wool	170		
Wool of 100 lbs of Wool	140		
Wool of 100 lbs of Wool	243		
Wool of 100 lbs of Wool	30		
Wool of 100 lbs of Wool	50		
	5712	2	6

	<u>£</u>		
11. 1st. 1/2/1000	100	Wheat	7 29
14. 1000	100	Barley	3 36
4. 1000	60	Oats	38
5. 1000	60	Hay	90
3. 1st. 1000	54	Small	90
1. 1st. 1000	24	2nd. 1000	42
7. 1000	17	Hay	300
16. 1st. 1000	20	3rd. 1000	66
26. 1st. 1000	13	1000 1000	15
6. 1st. 1000	18		17 03
1. 1000	5		
26. 1000	472	1000 1000 1000	416
26. 1000	41 10	1000 1000 1000	225
105. 1000	100	1000 1000 1000	501
42. 1000	130	1000 1000 1000	105 17 6
1. 1000	10		132 6 17 6
1. 1000	4 10		
19. 1000	90 10		
82. 1000	143 10		
	1630 10		
Implement	255	Live Stock	1630 3
1000 1000	16	Implement	271
	271	1000 1000	1703
		1000 1000 1000	132 6 17 6
			£ 4939 0 6