

Thank you for using eradoc, a platform to publish electronic copies of the Rothamsted Documents. Your requested document has been scanned from original documents. If you find this document is not readable, or you suspect there are some problems, please let us know and we will correct that.



ROTHAMSTED
RESEARCH

The Gardens of Rothamsted Manor - Management Plan

[Full Table of Content](#)



Figures

Rothamsted Research

Rothamsted Research (2003) *Figures* ; The Gardens Of Rothamsted Manor - Management Plan, pp 58 - 79

FIGURES

- Fig. 1 **Rothamsted Herts. neare Harding, Mrs Bennet's, Aug.t 1787**, T.Baskerfield, British Library ref. Maps K.Top.15.67.a.
- Fig. 2 **Rothamsted from the South-West**, Lady Caroline Lawes, 1847, reproduced from D.H.Boalch, *The Manor of Rothamsted*, 1953.
- Fig. 3 **Rothamsted from the pond**, Lady Caroline Lawes, undated.
- Fig. 4 **Rothamsted from the South**, 19th Century view, undated.
- Fig. 5 **Rothamsted from the South-West**, 19th Century view, undated.
- Fig. 6 **The Lime Walk at Rothamsted**, *Gardeners' Chronicle*, (June 5th, 1875), p.721.
- Fig. 7 **Rothamsted from the South-West**, *Gardeners' Chronicle*, (June 5th, 1875), p.722.
- Fig. 8 **Rothamsted from the South-West**, *Country Life*, (March 10th, 1906), p.349.

Unless otherwise stated, the following are photographs taken by the author:

- Fig. 9 **Main entrance gates and fence screen.**
- Fig. 10 **Front lawn** - view south from the house.
- Fig. 11 **Hedge to drive** - at entrance to front lawn.
- Fig. 12 **Ha-ha.**
- Fig. 13 **View across pond** - postcard.
- Fig. 14 **View across pond** - in 2002.
- Fig. 15 **Croquet lawn** - view north to rose lawn and orchard.
- Fig. 16 **Rose lawn** - view north from central feature.
- Fig. 17 **Herbaceous border** - view south, showing Dutch gables to walled garden.
- Fig. 18 **Sundial and herbaceous border** - view north.
- Fig. 19 **Gate to walled garden** - from rose lawn.
- Fig. 20 **Garden wall - northern end.**
- Fig. 21 **Rose arch** - view south, showing hostas and ha-ha wall.
- Fig. 22 **Rose arch** - showing summerhouse in Manor Wood.
- Fig. 23 **Stone boy** - C17 statue, stolen 1997. Photo - Rothamsted archive.
- Fig. 24 **Reclining nude** - statue by Sir Charles Lawes-Wittewronge.
- Fig. 25 **Yew ball under restoration** - Rose lawn.
- Fig. 26 **Ha-ha wall** - showing coping damage.
- Fig. 27 **Walled garden** - view south to house.
- Fig. 28 **Walled garden** - current use.
- Fig. 29 **Apple arch** - in walled garden. View to west.
- Fig. 30 **Apple arch.**
- Fig. 31 **Dirce Avenue** - view west from croquet lawn.
- Fig. 32 **Dirce Avenue** - view east towards house.
- Fig. 33 **The Death of Dirce** - sculpture by Sir Charles Lawes-Wittewronge.
- Fig. 34 **Dirce Circle** - view west, showing Wellingtonias.
- Fig. 35 **Summerhouse.**
- Fig. 36 **Path in Manor Wood** - leading to summerhouse.
- Fig. 37 **'Orchard'** - tree-planting, west end.
- Fig. 38 **Barns** - view from south.
- Fig. 39 **Soil store** - on left. Walled garden on right.

- Fig. 40 **Yard** - view west, showing gateway to house courtyard.
- Fig. 41 **Outbuildings** - to north of walled garden.
- Fig. 42 **Outbuildings**.
- Fig. 43 **Broadbalk** - aerial view, showing experimental farm, and Roman Temple (bottom left). Cover of '*Rothamsted Experimental Station - Guide to the Classical Field Experiments*', 1984.
- Fig. 44 **Roman Temple** - excavated foundations, adjacent to experimental farm.
- Fig. 45 **Roman Temple** - plan of precinct. From '*Notes on the Roman structure at Rothamsted Experimental Farm*'.
- Fig. 46 **Painting and map** - (copy from Kate Harwood).
- Fig. 47 **Bedding display** - in front of Institute buildings.

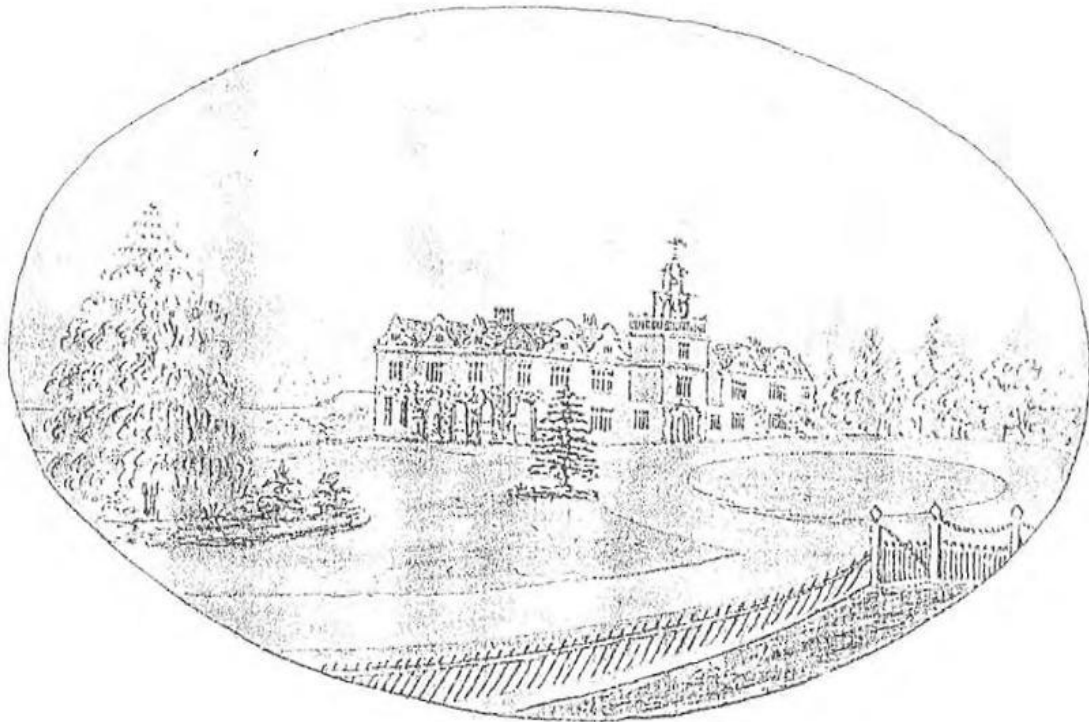


Fig. 1



Fig. 2 Rothamsted from the South-West, Lady Caroline Lawes, 1847



Fig. 3 Rothamsted from the pond, Lady Caroline Lawes, undated.

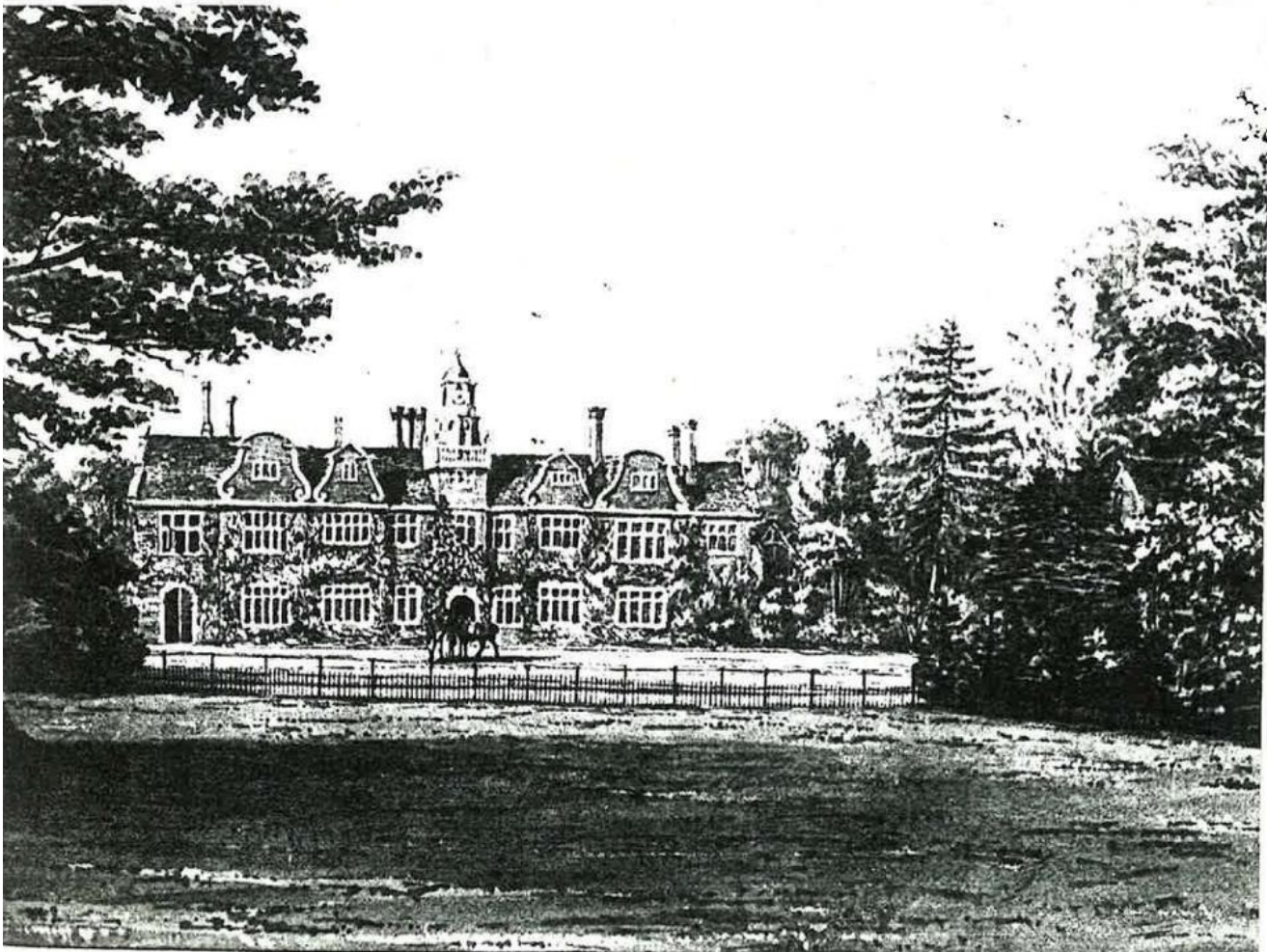


Fig. 4 Rothamsted from the South, 19th Century view, undated.

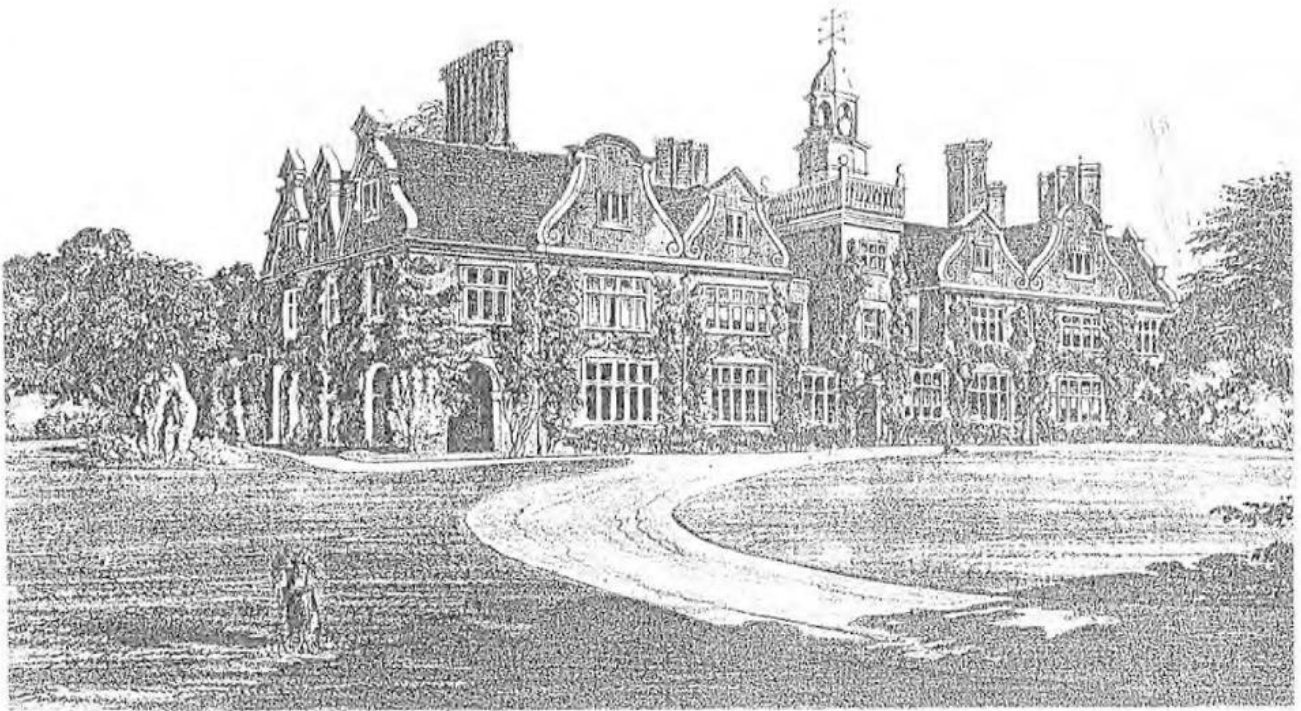
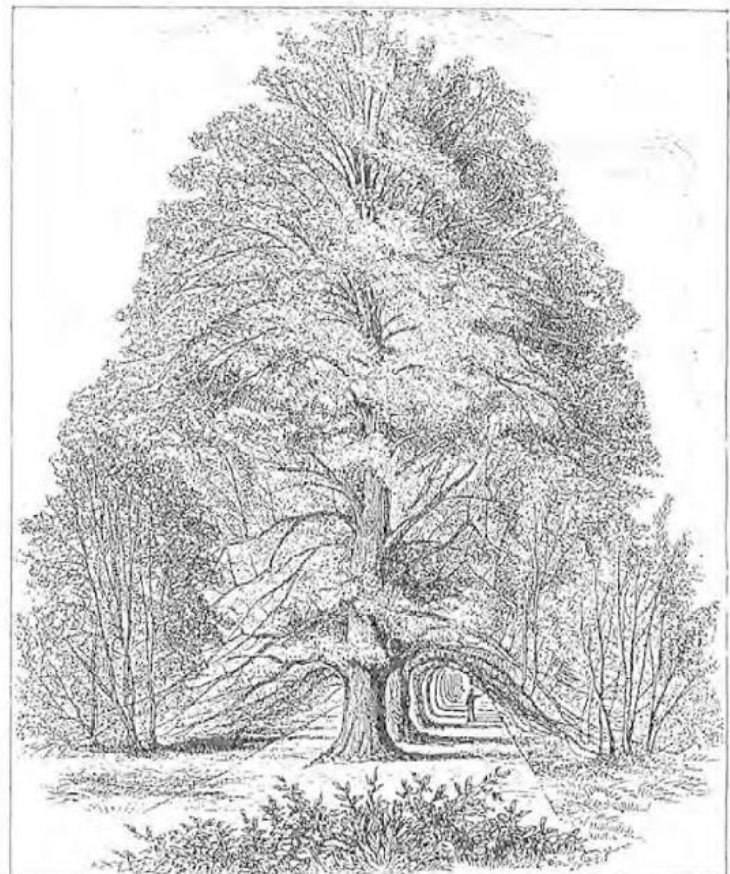


Fig. 5 **Rothamsted from the South-West**, 19th Century view, undated.

Fig. 6 **The Lime Walk at Rothamsted**, *Gardeners' Chronicle*, (June 5th, 1875).



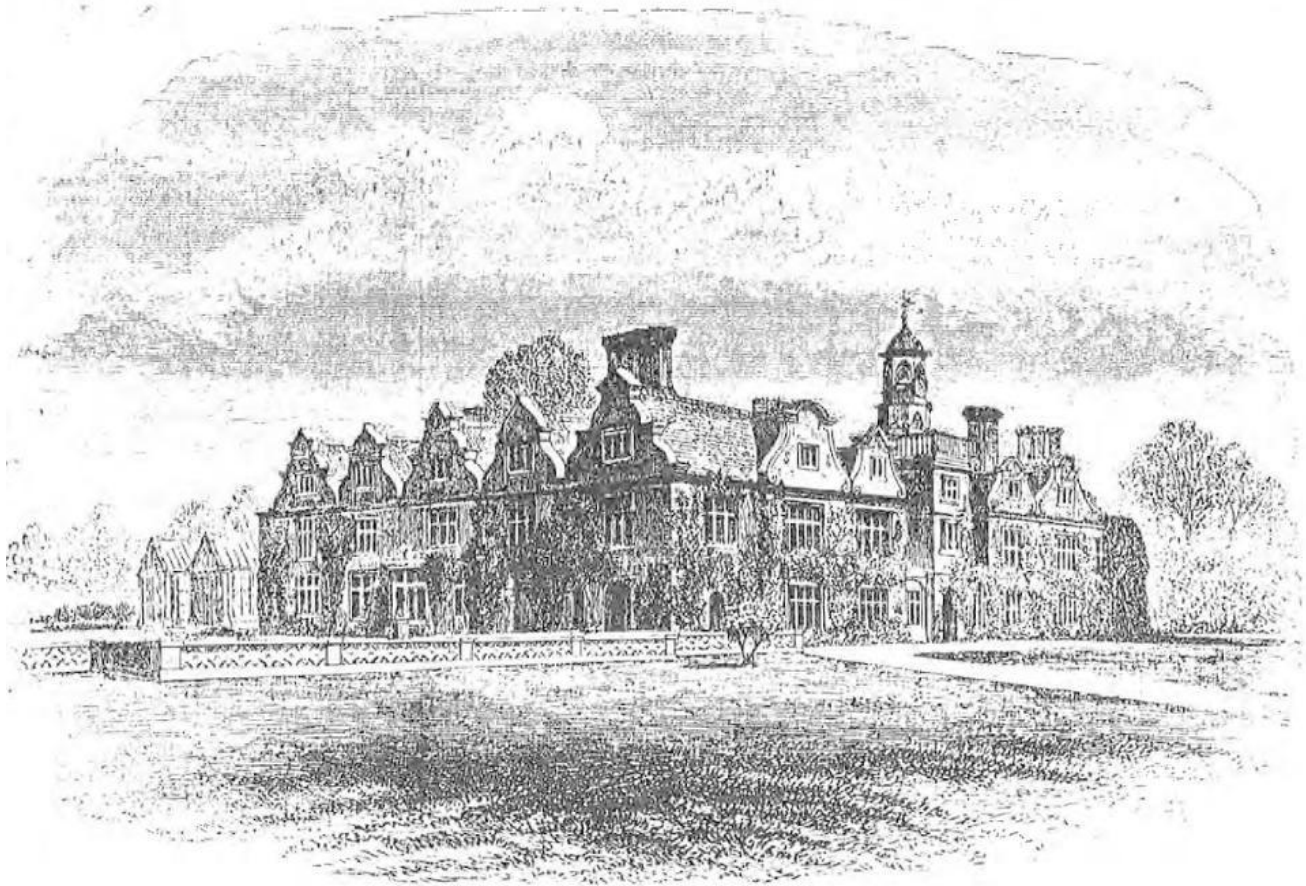


Fig. 7 Rothamsted from the South-West, *Gardeners' Chronicle*, (June 5th, 1875)

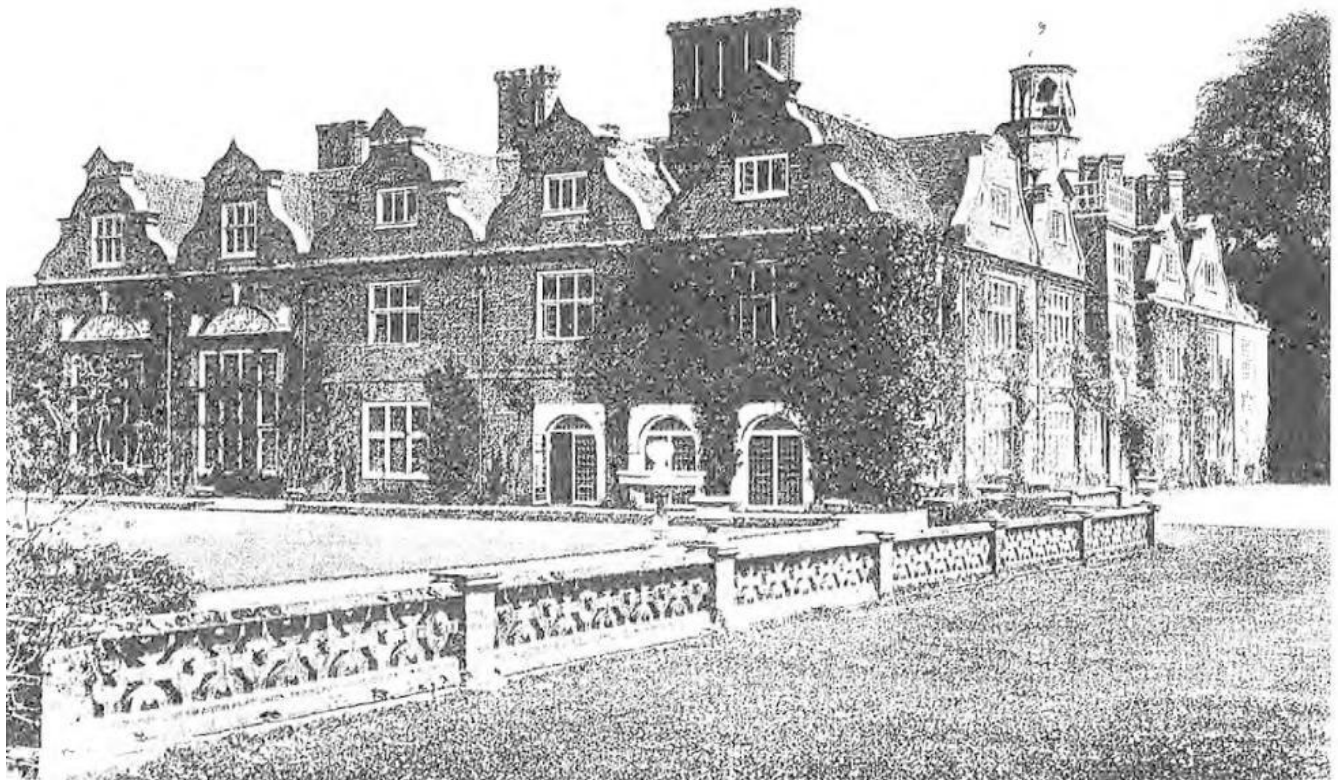


Fig. 8 Rothamsted from the South-West, *Country Life*, (March 10th, 1906)

Fig. 9 Main entrance gates and fence screen.



Fig. 10 Front lawn - view south from the house.



Fig. 11



Fig. 12 Ha-ha.



Fig. 13 View across pond - postcard.



Fig. 14 View across pond - in 2002.



Fig. 15 Croquet lawn - view north to rose lawn and orchard.



Fig. 16 Rose lawn - view north from central feature.



Fig. 17 **Herbaceous border - view south**



Fig. 18 **Sundial and herbaceous border**



Fig. 19 **Gate to walled garden**



Fig. 20 **Garden wall - northern end.**



Fig. 21 Rose arch



Fig. 22 Rose arch



Fig. 23 Stone boy - C17 statue, stolen 1997.



Fig. 24 Reclining nude - statue by Sir Charles Lawes-Wittewronge.



Fig. 25 Yew ball under restoration - Rose lawn.

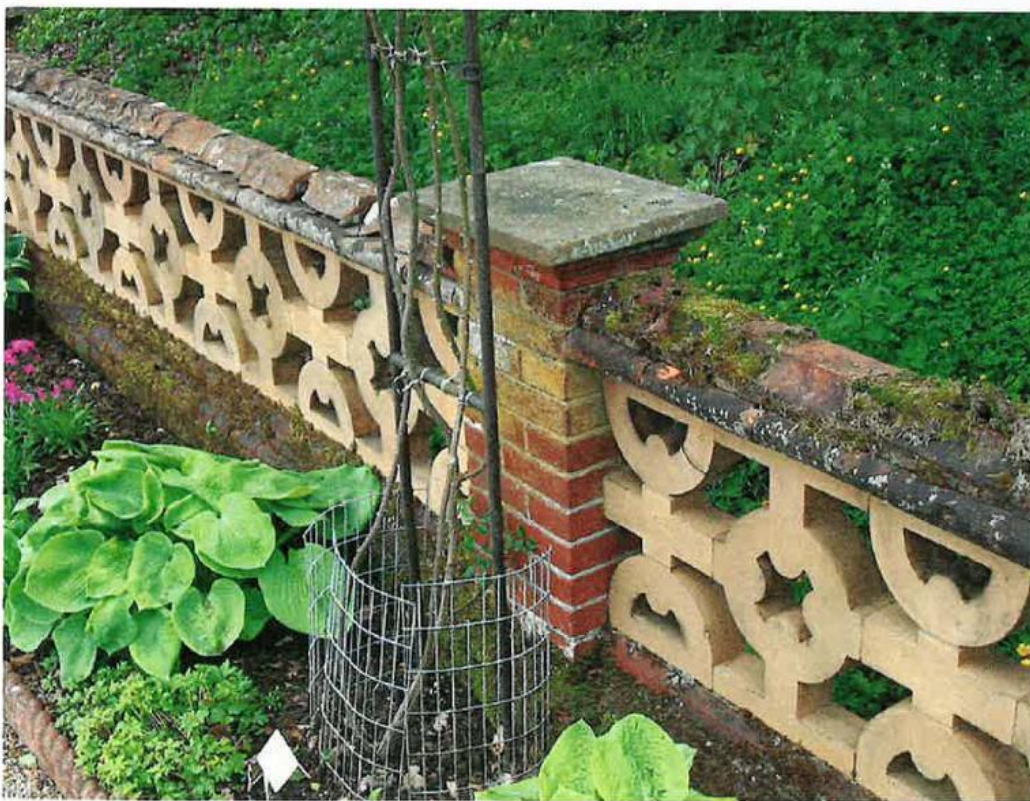


Fig. 26 Ha-ha wall - showing coping damage.



Fig. 27 Walled garden - view south to house.



Fig. 28 Walled garden - current use.



Fig. 30 Apple arch.



Fig. 29 Apple arch - in walled garden. View to west.



Fig. 31 **Dirce Avenue** - view west from croquet lawn.



Fig. 32 **Dirce Avenue** - view east towards house.



Fig. 33 **The Death of Dirce** - sculpture by Sir Charles Lawes-Wittewronge.



Fig. 34 **Dirce Circle** - view west, showing Wellingtonias.



Fig. 35 Summerhouse.



Fig. 36 Path in Manor Wood



Fig. 37 'Orchard' - tree-planting, west end.



Fig. 38 **Barns** - view from south.



Fig. 39 **Soil store** - on left. **Walled garden** on right.



Fig. 40 **Yard** - view west, showing gateway to house courtyard.



Fig. 41 **Outbuildings** - to north of walled garden.



Fig. 42 **Outbuildings.**

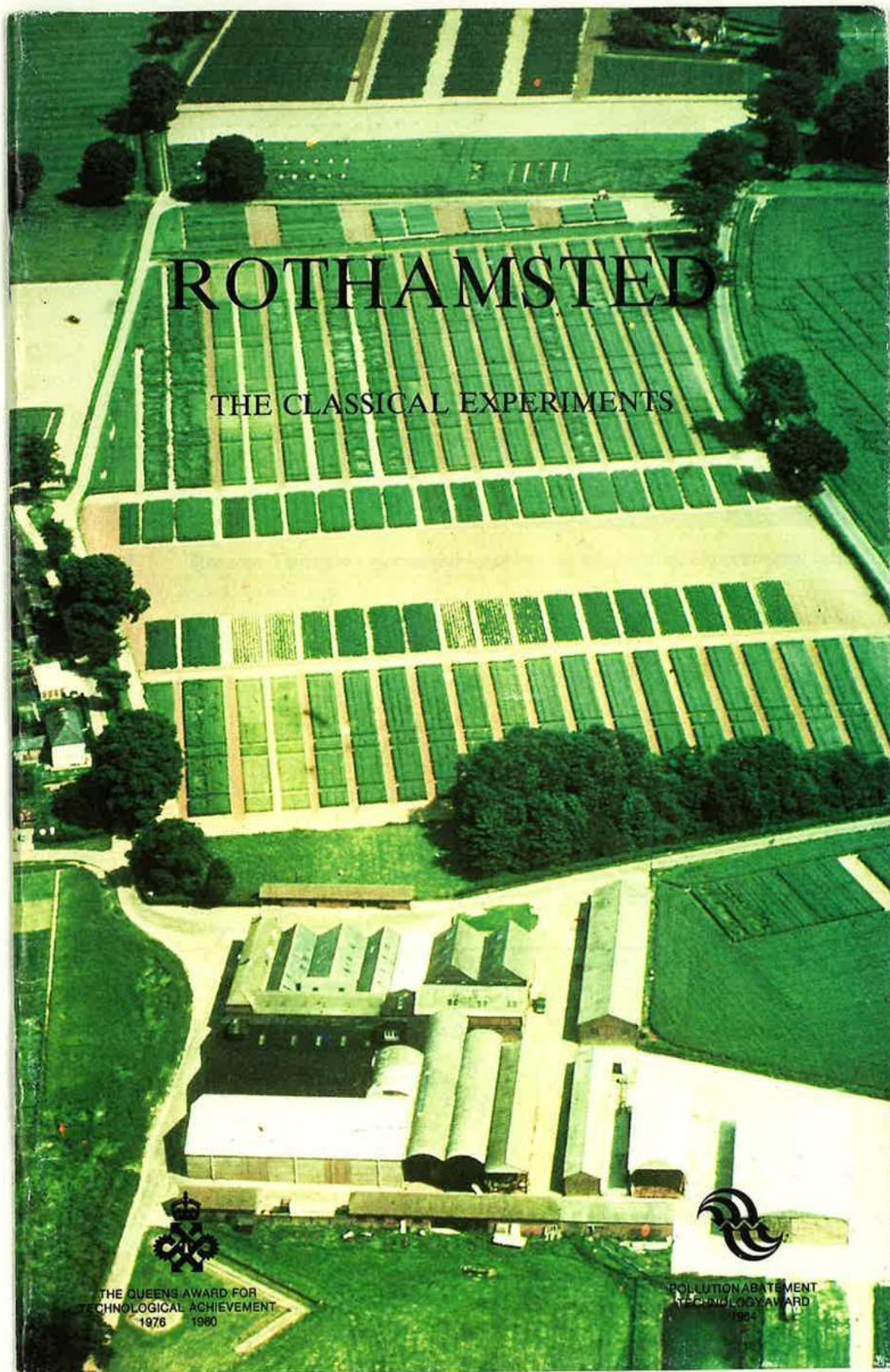


Fig. 43 **Broadbalk** - aerial view, showing experimental farm, and Roman Temple (bottom left).



Fig. 44 Roman Temple - excavated foundations, adjacent to experimental farm.

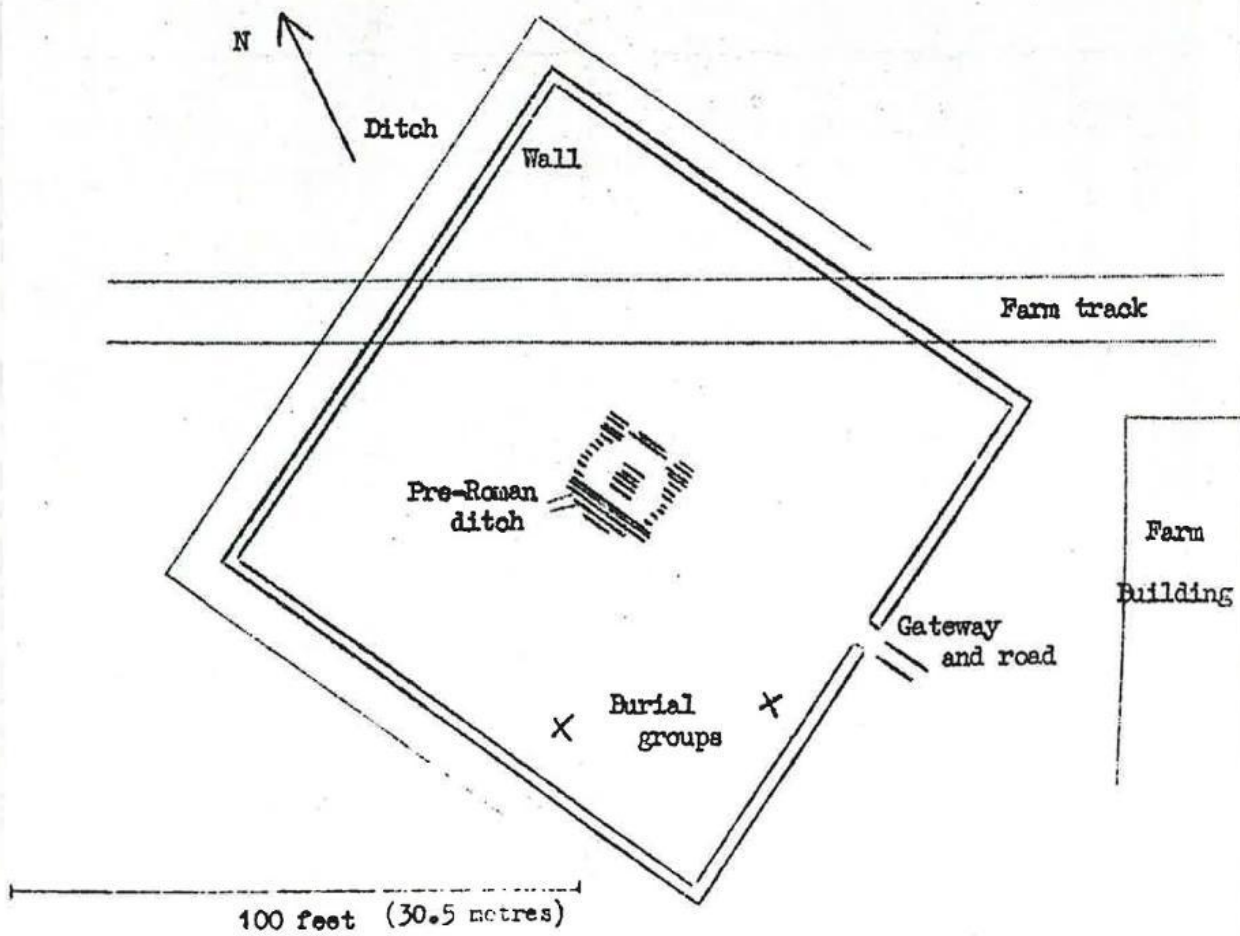


Fig. 45 Roman Temple - plan of precinct.



Fig. 46



Fig. 47 Bedding display - in front of Institute buildings.