

Thank you for using eradoc, a platform to publish electronic copies of the Rothamsted Documents. Your requested document has been scanned from original documents. If you find this document is not readable, or you suspect there are some problems, please let us know and we will correct that.



ROTHAMSTED
RESEARCH

The Gardens and Landscape of Rothamsted Manor - an Historical Report - Volume 2 - Appendices and Figures



[Full Table of Content](#)

Maps and Figures

Rothamsted Research

Rothamsted Research (2001) *Maps and Figures* ; The Gardens And Landscape Of Rothamsted Manor - An Historical Report - Volume 2 - Appendices And Figures, pp 34 - 60

LIST OF MAPS

- Map 1 **Ordnance Survey**, 1:25,000, 1999.
- Map 2 **Aerial Photograph**, 1980, HALS ref. TL1213/1313 531.
- Map 3 ***The Plot of the Demeanes of the Mannor of Rothamsted...***, 16 perch to an inch, 1623, reproduced from '*Observations of Weather*' – *The Weather Diary of Sir John Wittewronge of Rothamsted 1684-1689*, ed. M.Harcourt Williams & J.Stevenson, 1999.
- Map 4 **Tracing of the 1623 Map**, traced from the original (HALS, D/Elw P1), A.Cook, 2001.
- Map 5 **Dury & Andrews**, County Map, 1766.
- Map 6 ***Plan of the parish of Harpenden or Harding***, tracing from *Vol.2, Hertfordshire Illustrated*, T. Baskerfield, c.1790, British Library ref. MS.9063.fol.270.b, tracing by A.Cook, 2001.
- Map 7 **Bryant**, County Map, 1822, tracing by A.Cook, 2001.
- Map 8 **Ordnance Survey**, 1st Edition, 1" scale, 1834, tracing by A.Cook, 2001.
- Map 9 **Tithe Map for Harpenden Parish**, 1838, (HALS, PC679).
- Map 10 **Ordnance Survey**, 1st Edition, 6" scale, surveyed 1878, published 1884.
- Map 11 **Ordnance Survey**, 1st Edition, 25" scale, surveyed 1878, published 1884.
- Map 12 **Ordnance Survey**, 3rd Edition, 25" scale, 1924.
- Map 13 **Ordnance Survey**, 1:2500, 1973.
- Map 14 **Rothamsted at the time of the 'Weather Diary' 1683-89**, Conjectural Plan, 1:2500, A.Cook, 2001.
- Map 15 **Rothamsted 1623**, The 1623 map re-oriented and adjusted to fit with OS surveying, 1:2500, A.Cook, 2001.

LIST OF FIGURES

- Fig. 1 **Rothamsted Manor, 1624**, Sketch preserved in 1636 Court Roll, reproduced from D.H.Boalch, *The Manor of Rothamsted*, 1953. Also appears in *Victoria County History*, and at HALS ref. HARP/51.
- Fig. 2 **Ground Plan of the House**, dated 1907, reproduced from *Victoria County History*.
- Fig. 3 **Rothamsted Herts. neare Harding, Mrs Bennet's, Aug.t 1787**, T.Baskerfield, British Library ref. Maps K.Top.15.67.a.
- Fig. 4 **Rothamsted from the South-West**, Lady Caroline Lawes, 1847, reproduced from D.H.Boalch, *The Manor of Rothamsted*, 1953.
- Fig. 5 **Rothamsted from the pond**, Lady Caroline Lawes, undated, HALS ref. Neg 83/H/18.
- Fig. 6 **Rothamsted from the South**, 19th Century view, undated, HALS ref. HARP/10.
- Fig. 7 **Rothamsted from the South-West**, *Gardeners' Chronicle*, (June 5th, 1875), p.722.
- Fig. 8 **The Lime Walk at Rothamsted**, *Gardeners' Chronicle*, (June 5th, 1875), p.721.
- Fig. 9 **Rothamsted from the South-West**, *Country Life*, (March 10th, 1906), p.349.
- Fig. 10 **Rothamsted from the West**, undated postcard c.1910, HALS ref. 83/H/18.

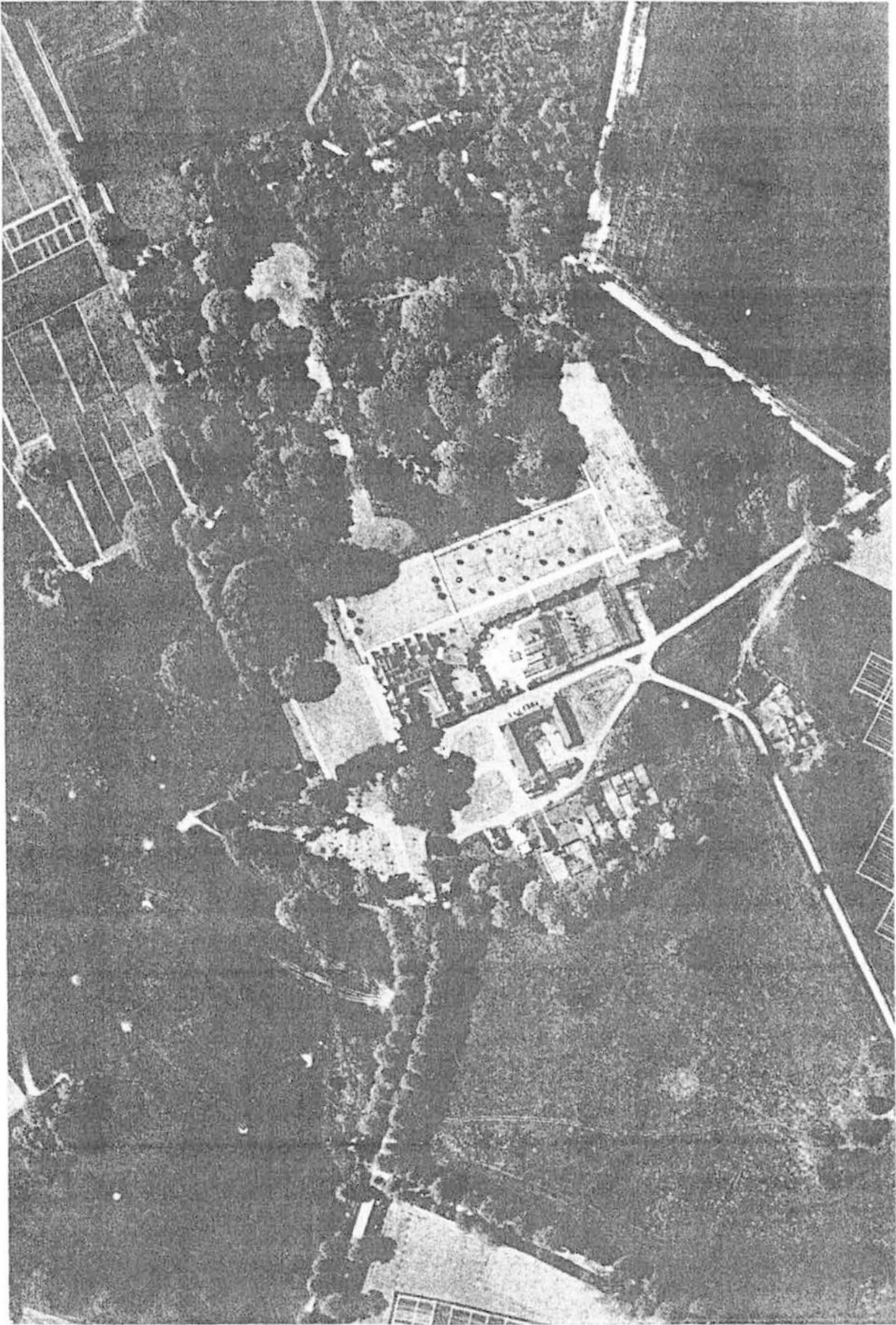
The following are photographs taken by the author in March 2001.

- Fig. 11 **The parterres, looking south.**
- Fig. 12 **Parterre – 'The Rose Lawn', looking north.**
- Fig. 13 **The kitchen garden wall from the parterre.**
- Fig. 14 **Sculpture by Sir Charles Lawes-Wittewronge on 'Rose Lawn', looking east.**
- Fig. 15 **Kitchen garden – north and east walls.**
- Fig. 16 **The West Front from the 'Warren' Avenue, looking east.**
- Fig. 17 **Sculpture; 'The Death of Dirce' by Sir Charles Lawes-Wittewronge.**
- Fig. 18 **The summer-house.**
- Fig. 19 **Part of the yew circle, north of the parterres.**
- Fig. 20 **The yard east of the house, looking east, with Cherry Cottage.**
- Fig. 21 **The gatehouse to the manor courtyard, looking west.**



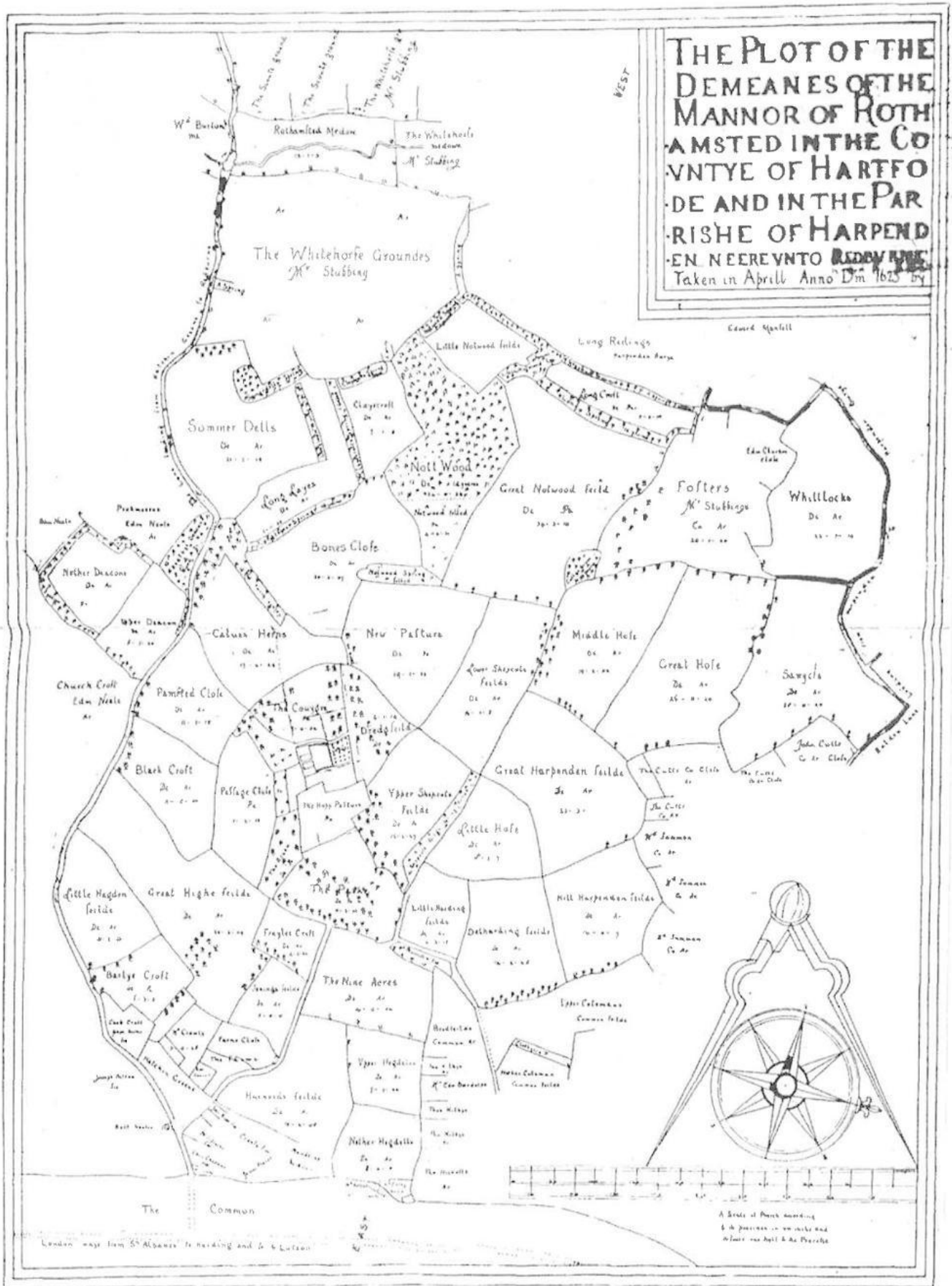
ORDNANCE SURVEY, 1:25,000, 1999,

MAP 1

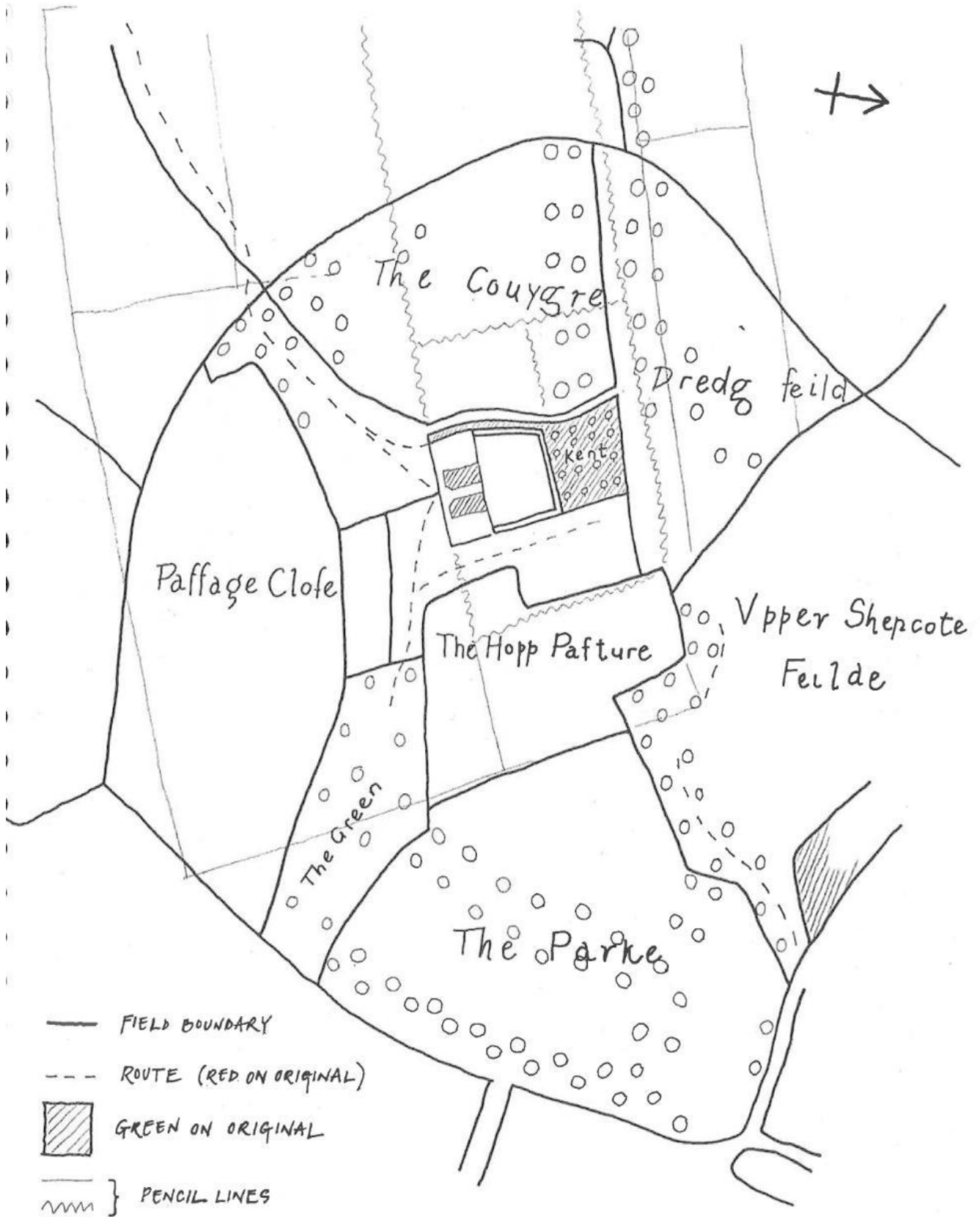


MAP 2





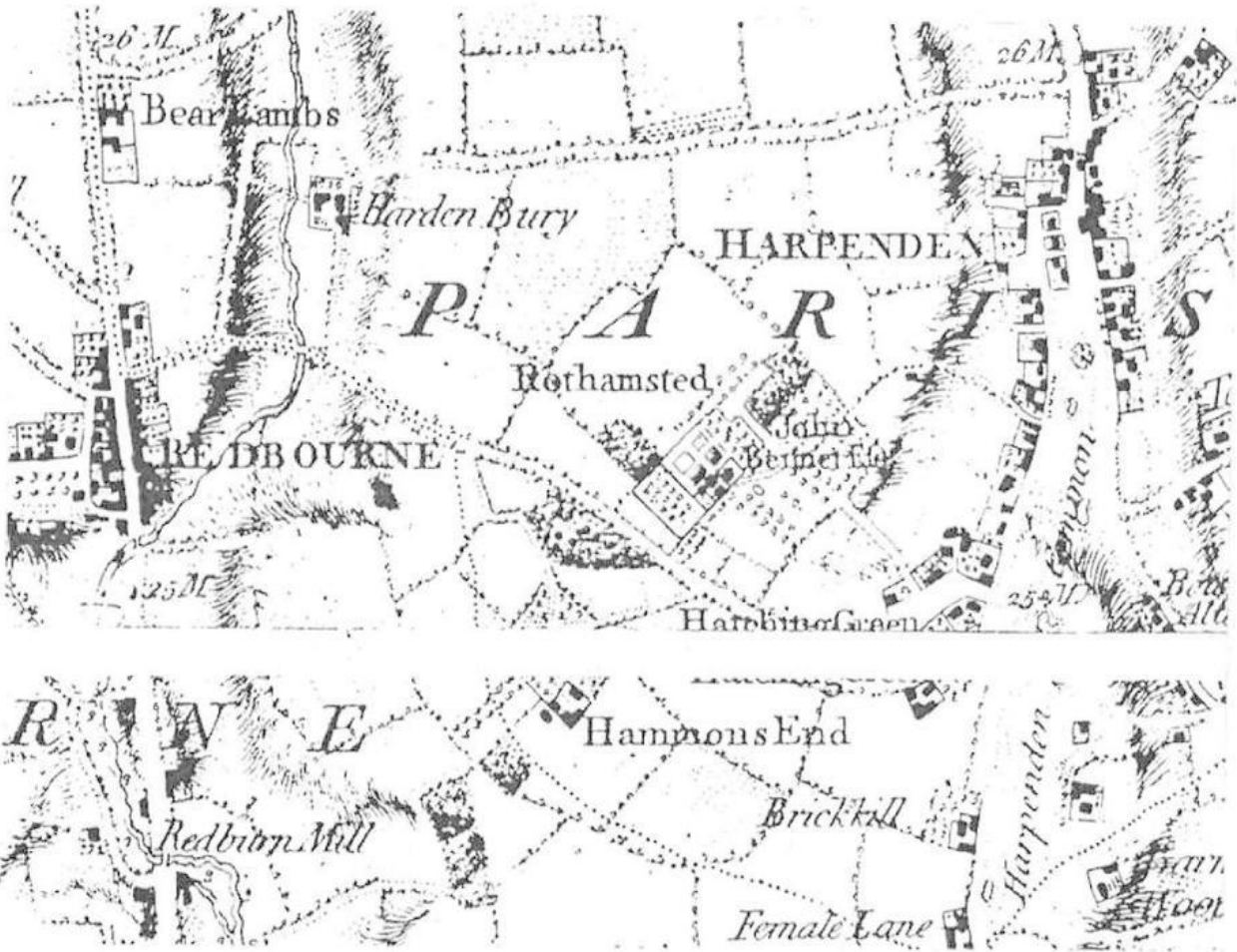
MAP 3



'THE PLOT OF THE MANNOR OF ROTHAMSTED... 1623'

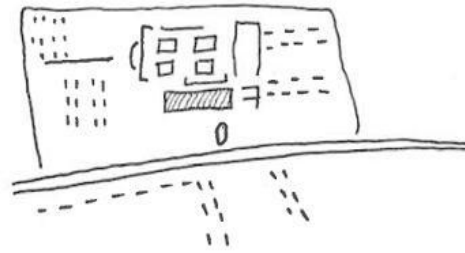
TRACING AT FULL SCALE

MAP 4



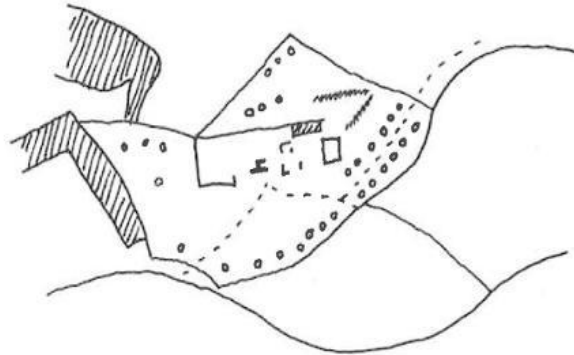
DURY & ANDREWS, 1766

MAP 5



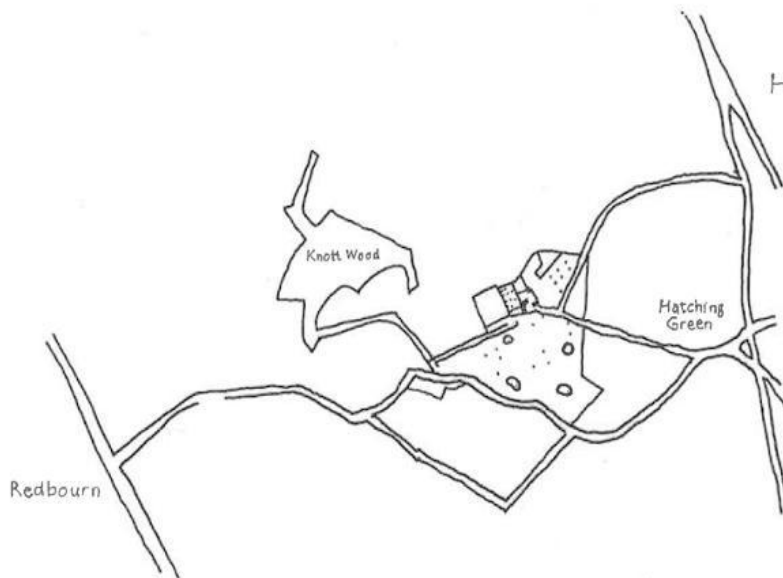
MAP 6

BASKERFIELD, c. 1790.



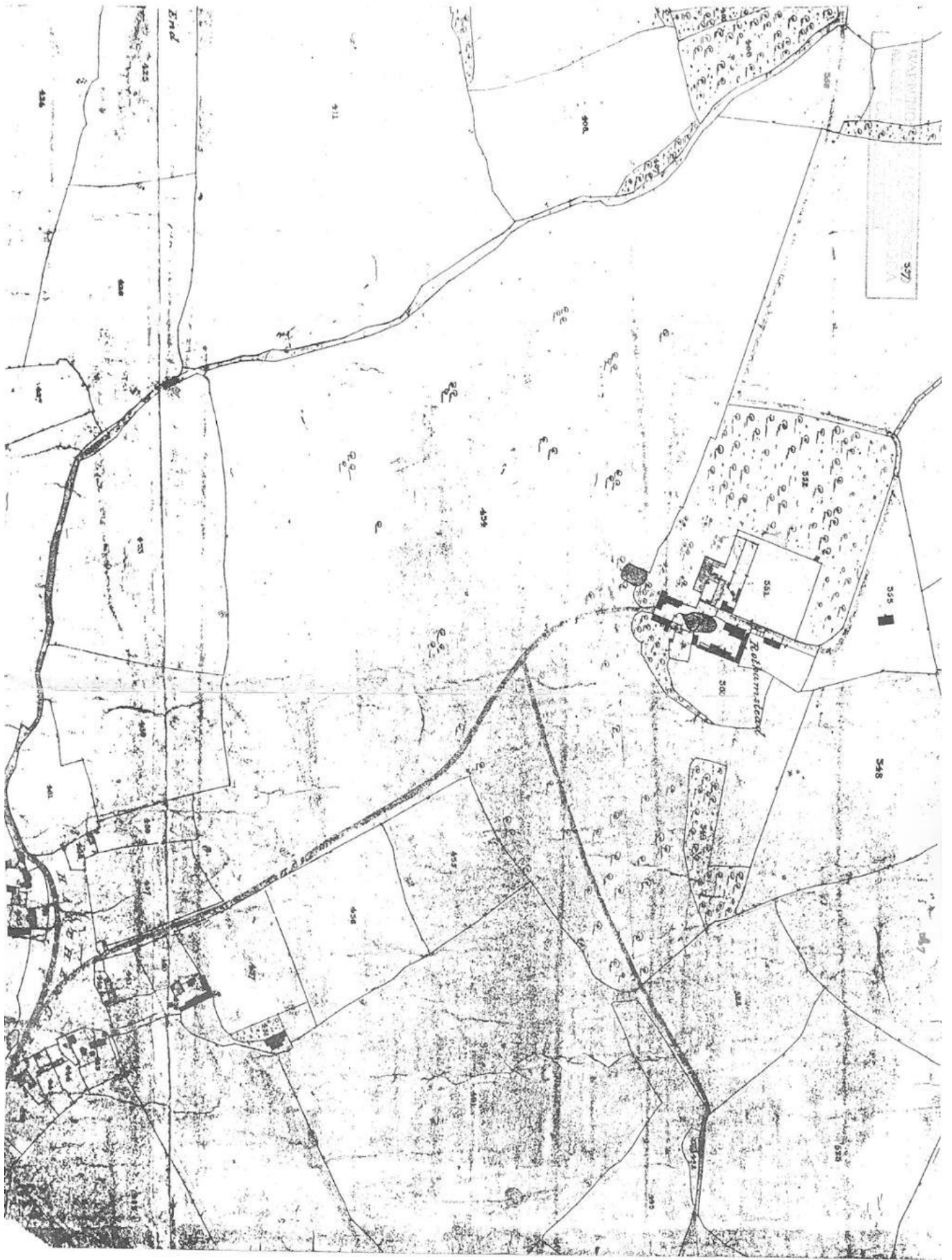
MAP 7

BRYANT, 1822.



MAP 8

OS, 1ST EDITION, 1", 1834.



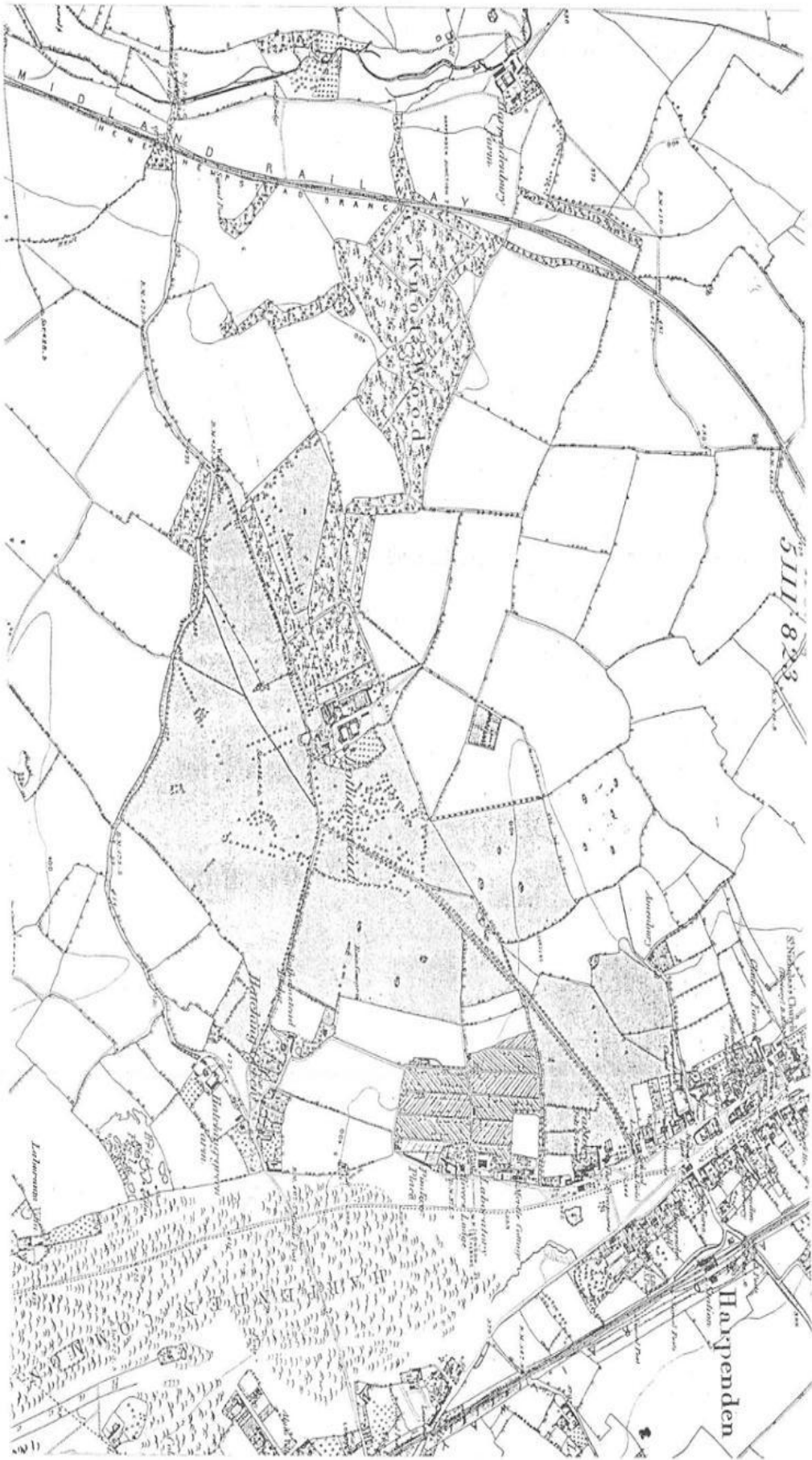
MAP 9

TITHE MAP, 1838.

- KEY TO FIELDS :
- 349 Little Wood
 - 350 Orchard (Meadow)
 - 351 Manor & Farm Buildings
 - 352 Wood and Plantation
 - 395 New Pasture
 - 454 'Home Field'-arable-John Sarnell

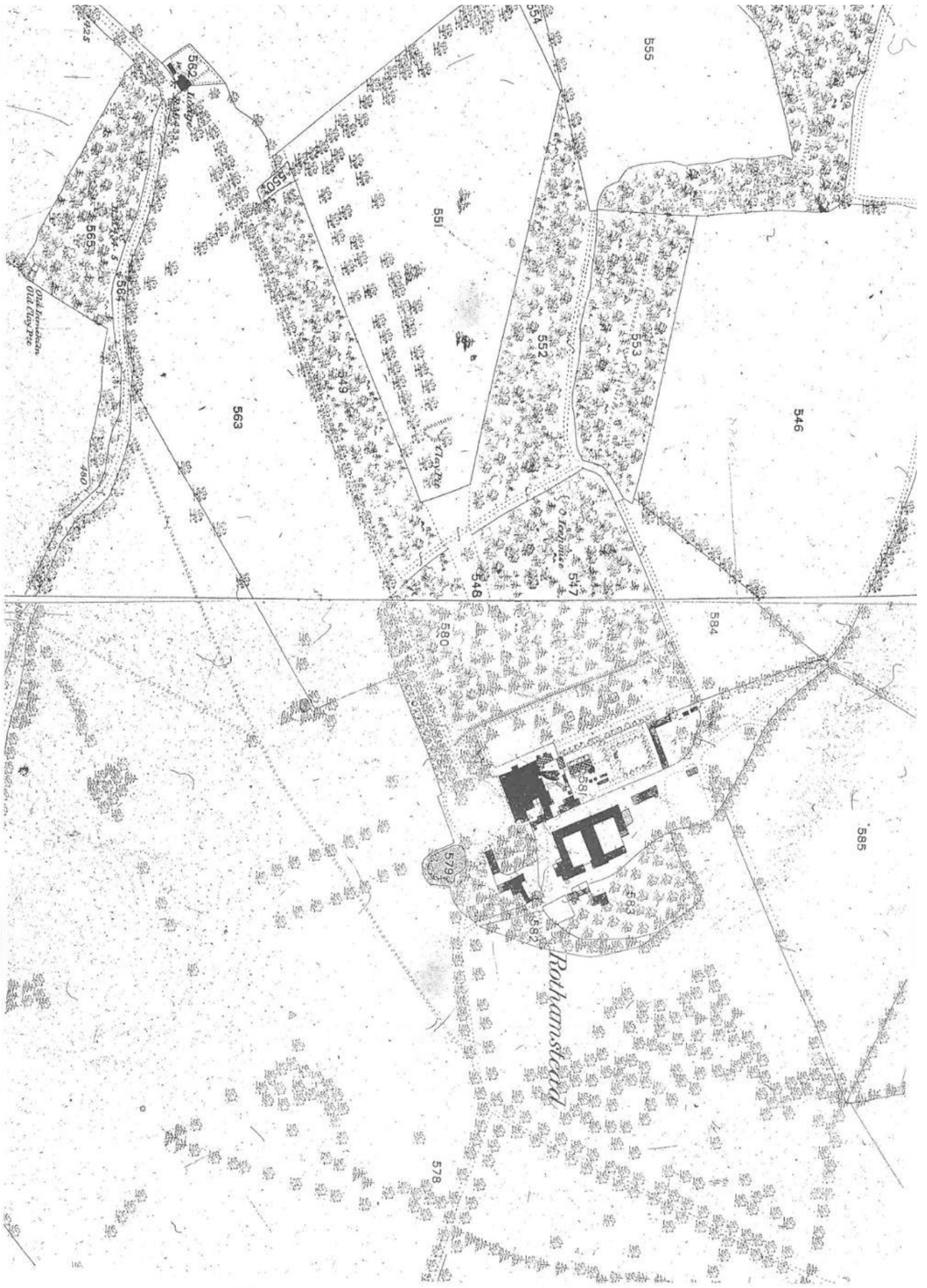


ORDNANCE SURVEY, 1ST EDITION, 6", SURV. 1878, publ. 1884.



MAP 10





MAP II

ORDNANCE SURVEY, 1ST EDITION, 25", Surv. 1878, publ. 1884.



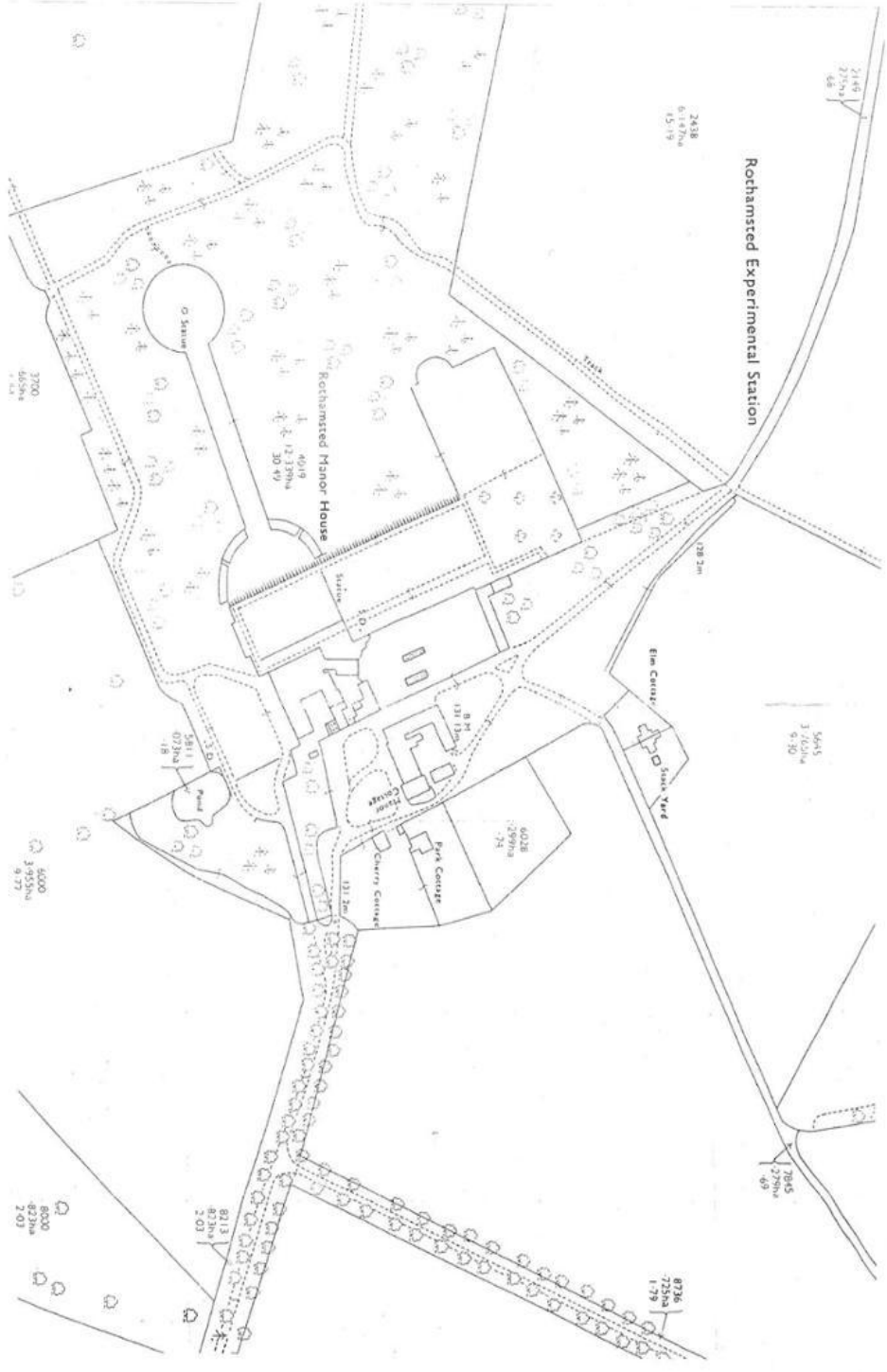


MAP 12

ORDNANCE SURVEY, 3RD EDITION, 25", 1924.

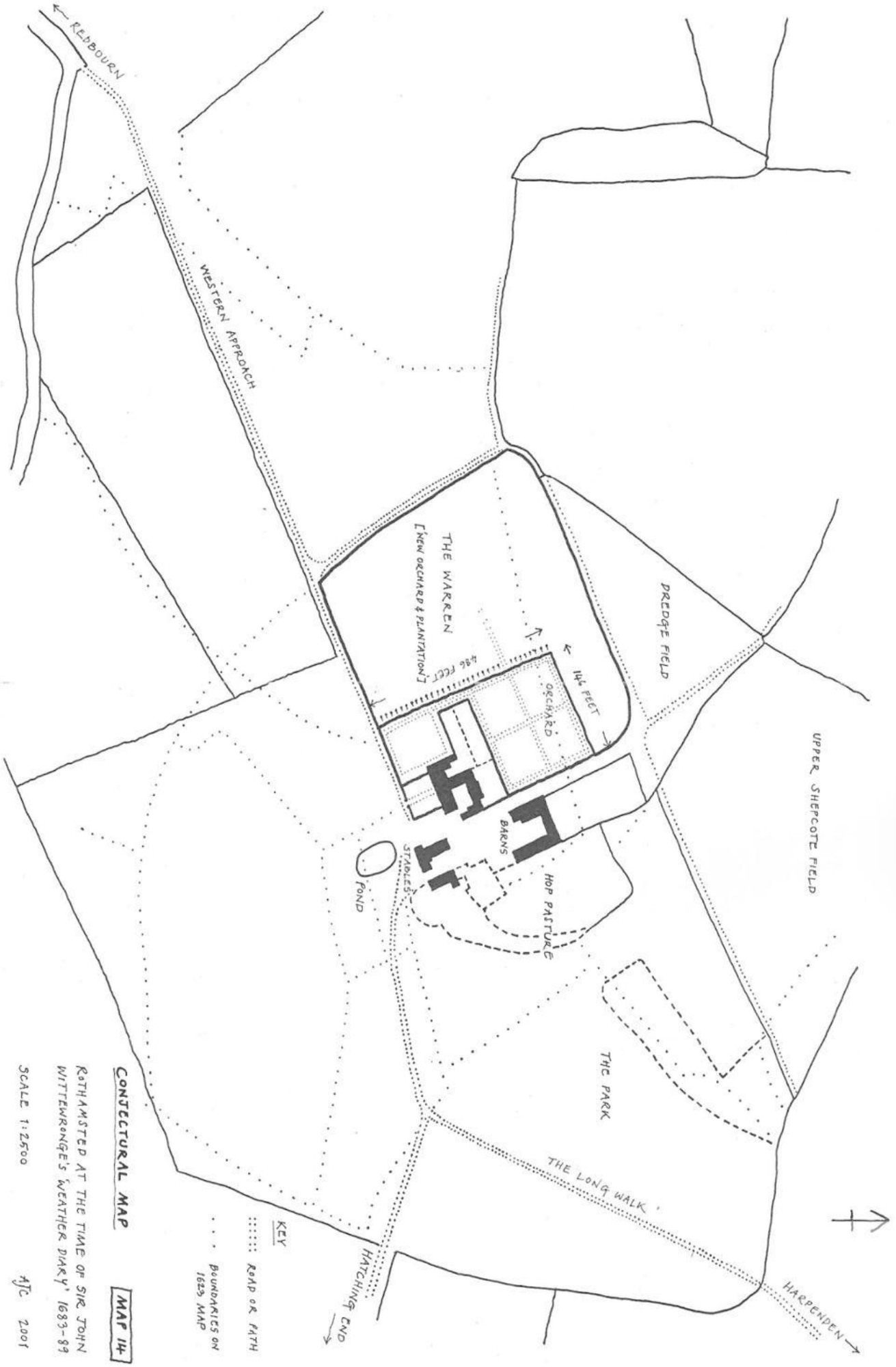


ORDNANCE SURVEY, 1:2500, 1973.



MAP 13





CONJECTURAL MAP

MAP 14

ROTHAMSTED AT THE TIME OF SIR JOHN WITTEWONGE'S 'WEATHER DIARY' 1683-89

SCALE 1:2500

AJC 2001

KEY
..... ROAD OR PATH
..... BOUNDARIES ON 1625 MAP

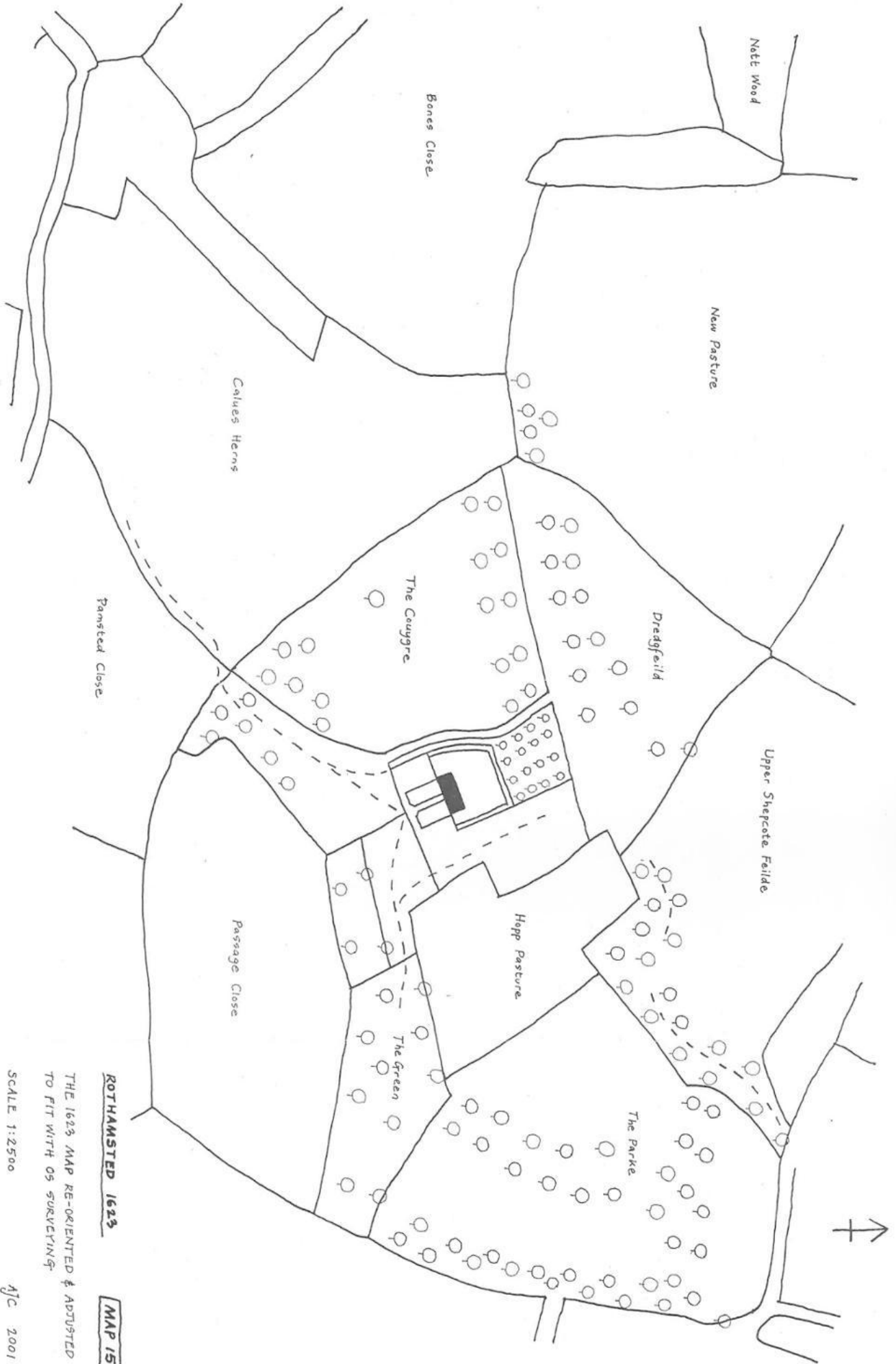
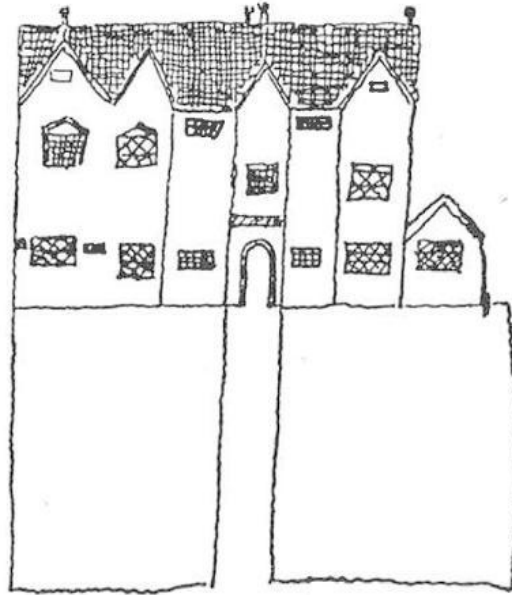


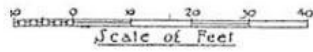
Fig. 1






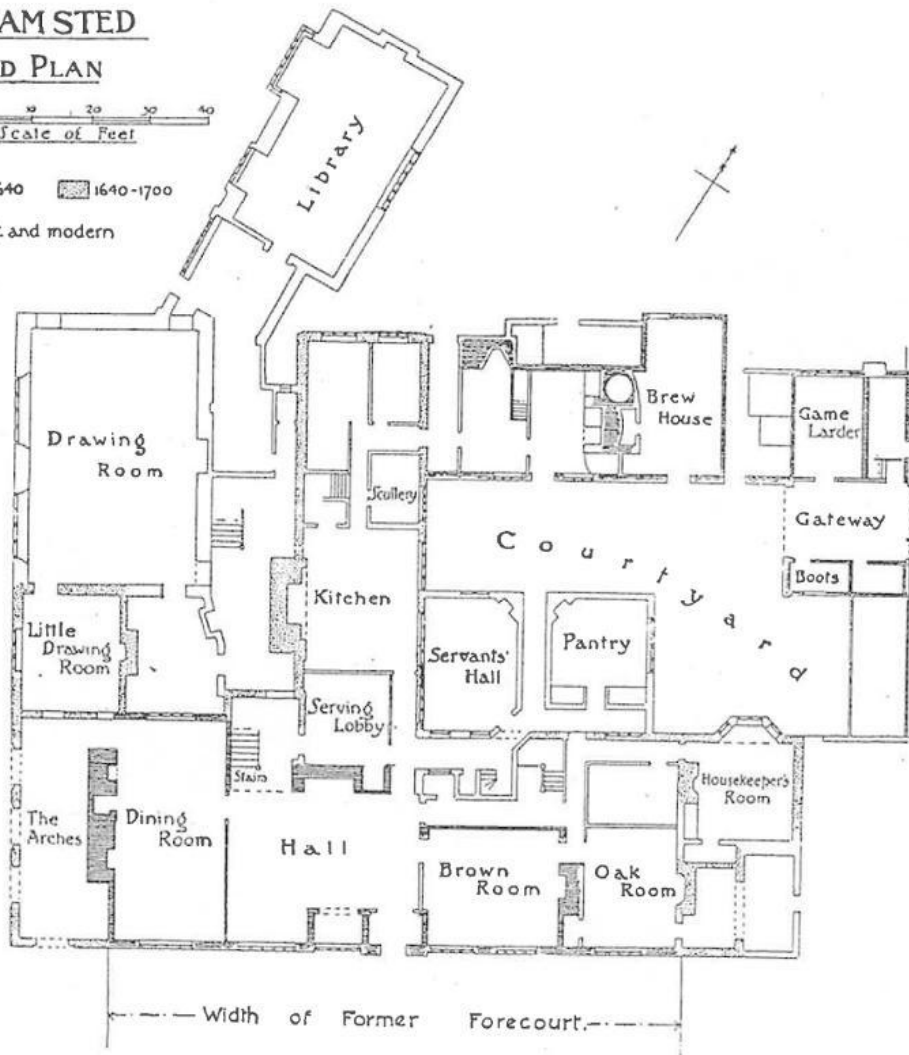
ROTHAMSTED MANOR, 1624

Fig. 2

**ROTHAMSTED
GROUND PLAN**



-  before 1640
-  1640-1700
-  18th cent. and modern



V. T. Hodgson, dd. 1907.

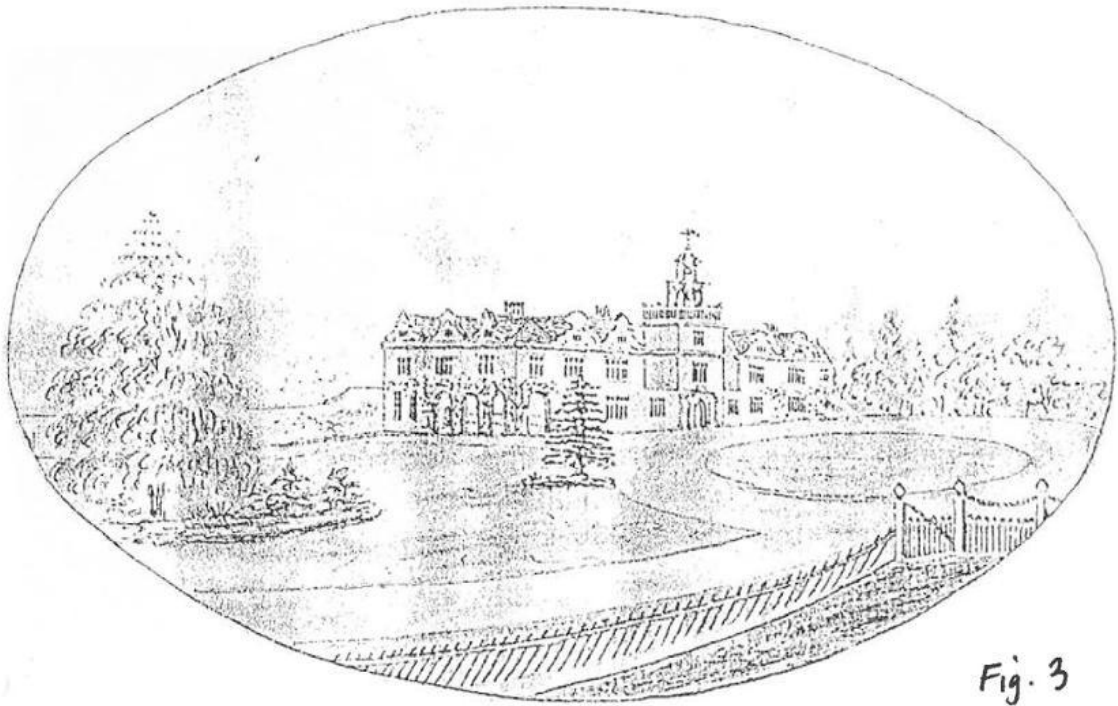


Fig. 3

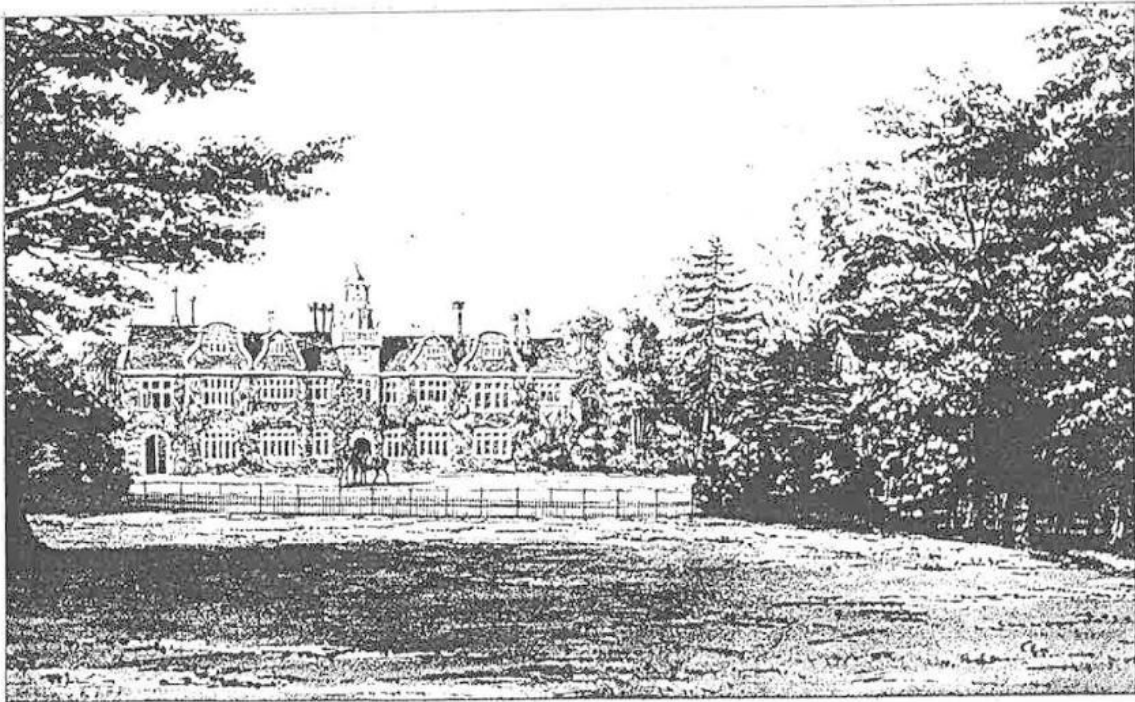
Fig. 4





Fig. 5

Fig. 6



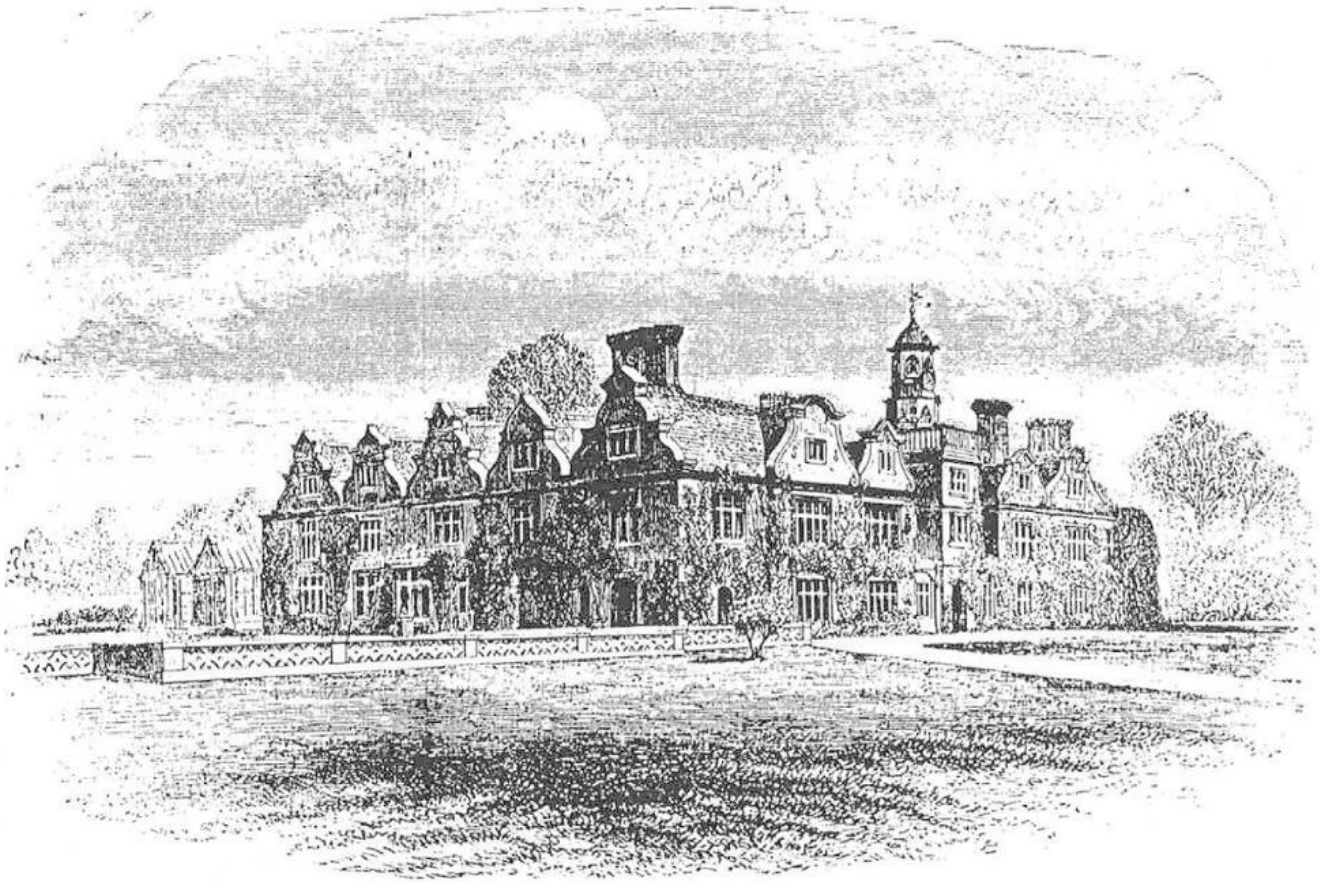


Fig. 7

Fig. 8



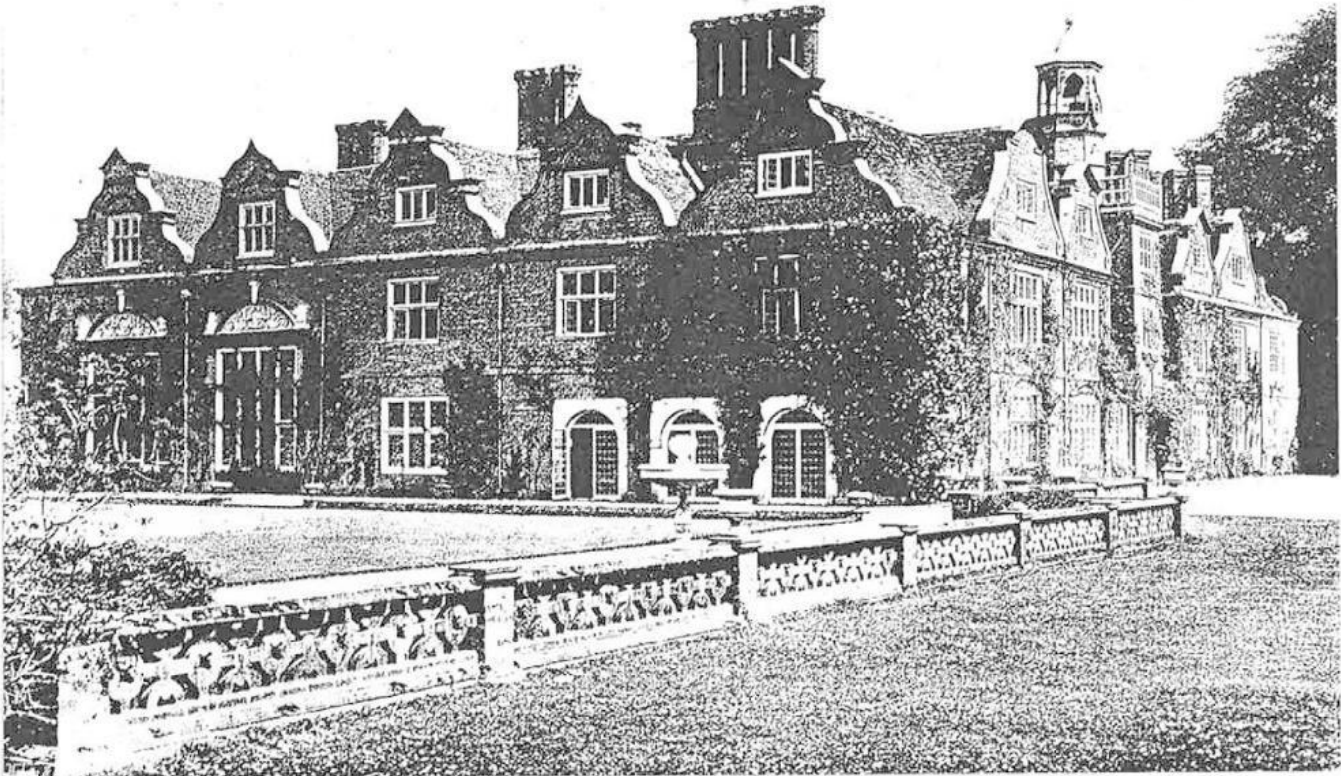


Fig. 9

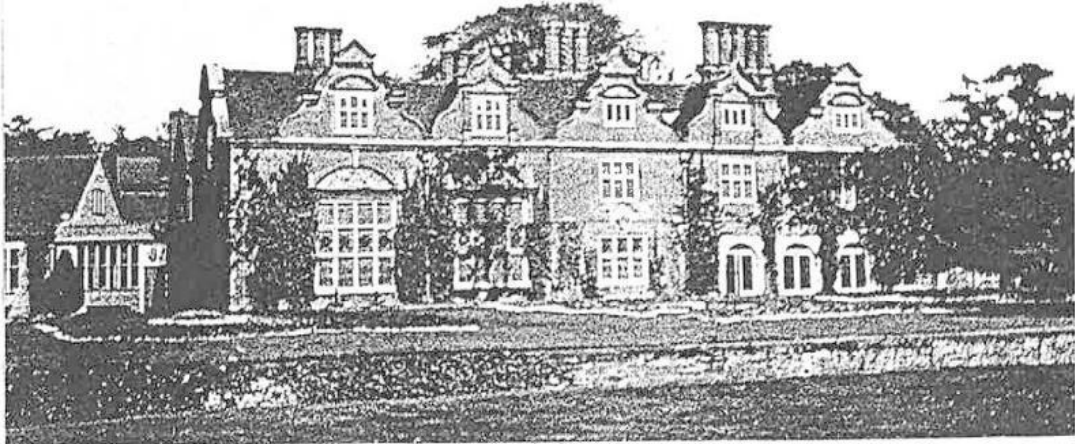


Fig. 10

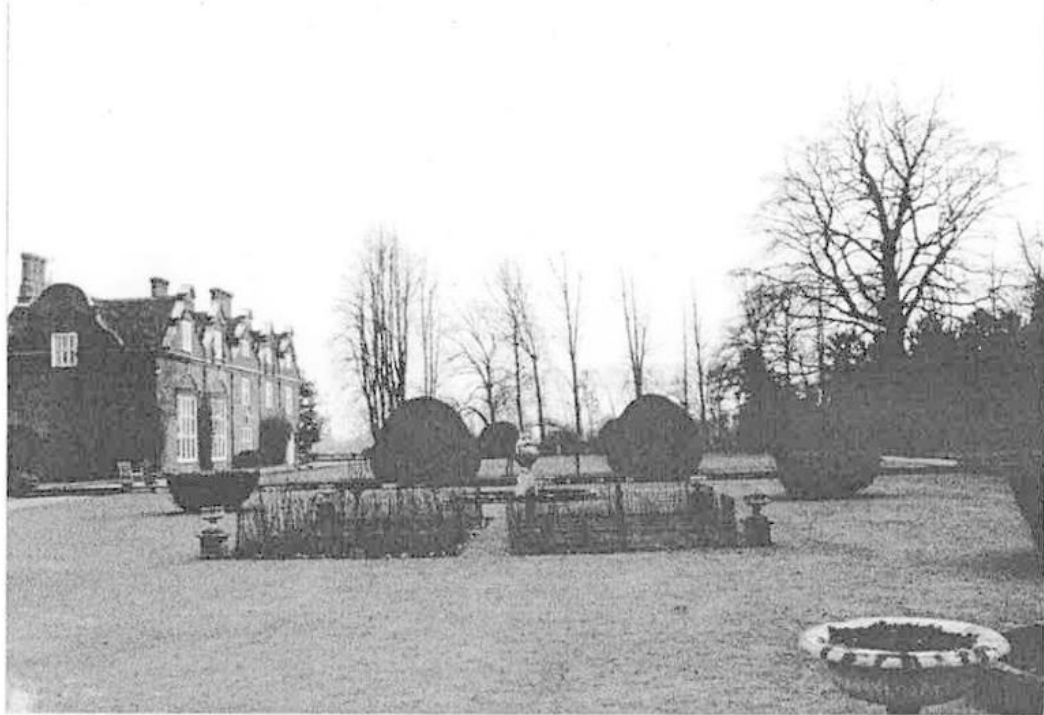


Fig. 11

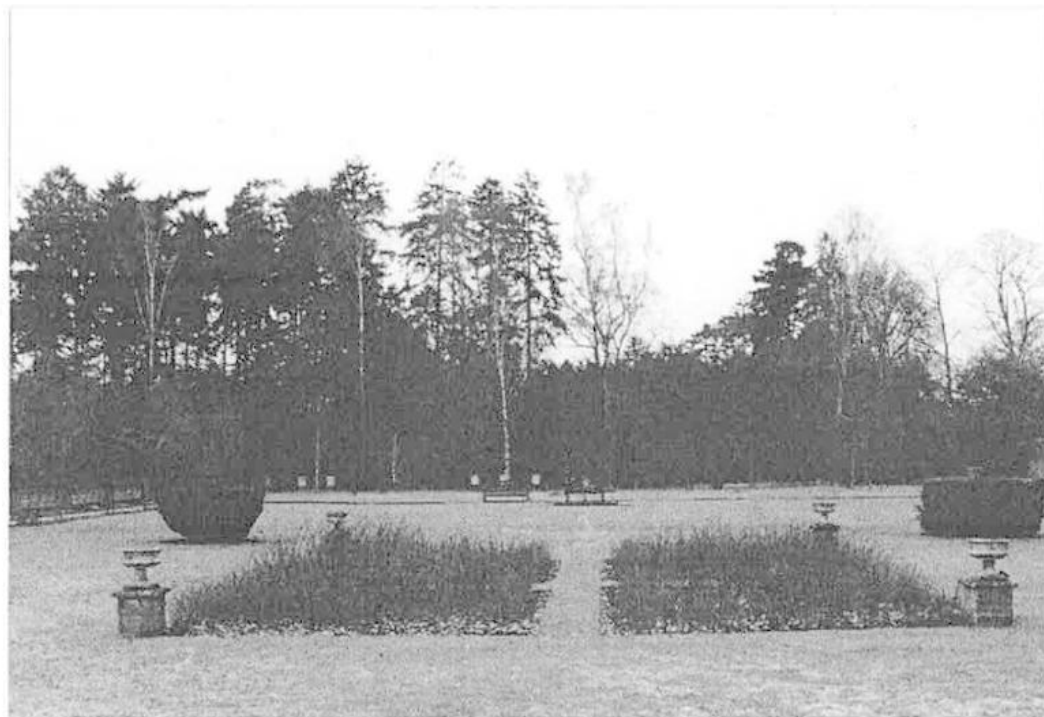


Fig. 12

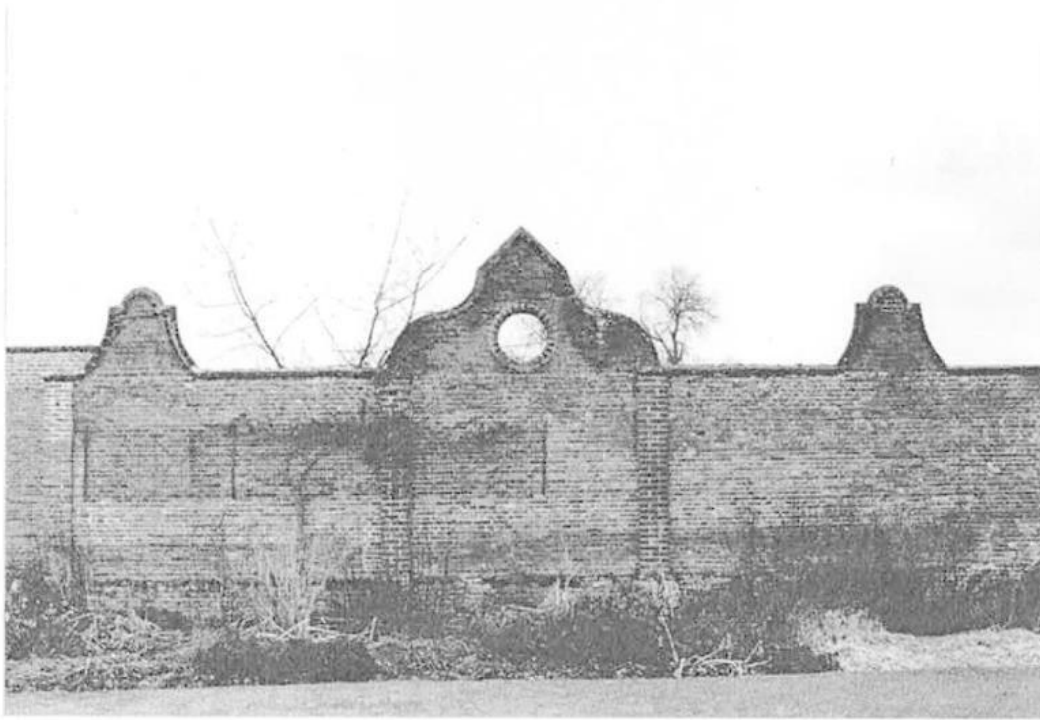


Fig. 13



Fig. 14

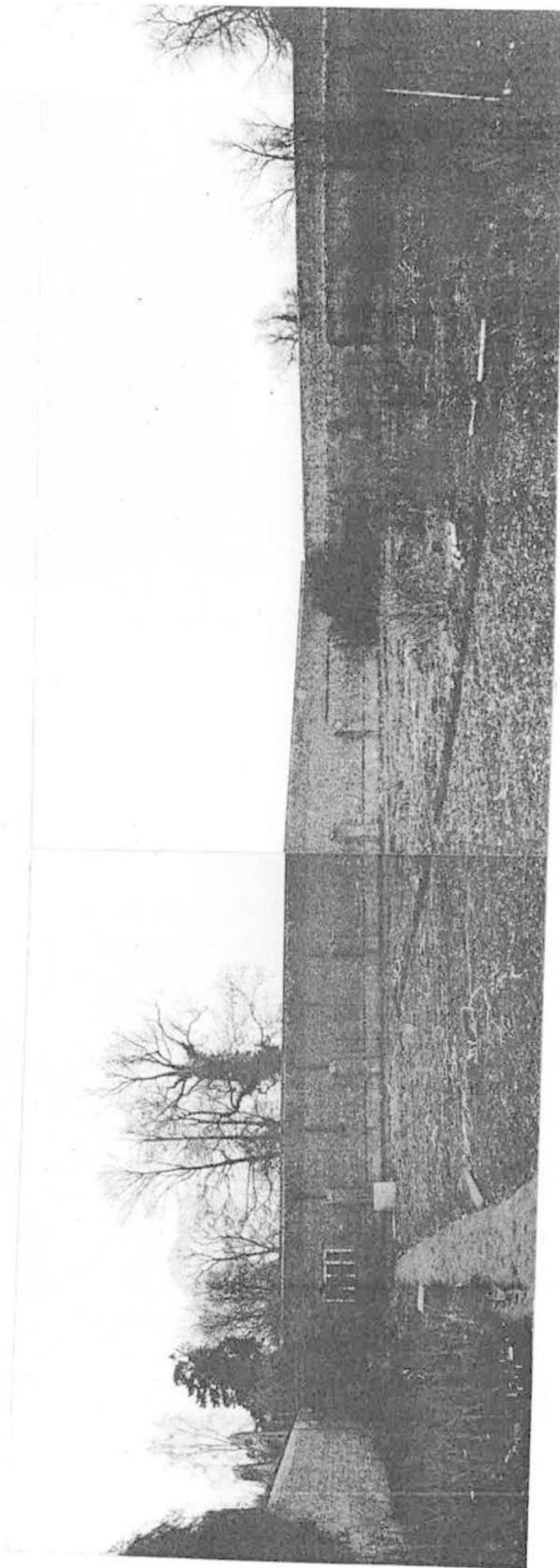


Fig. 15

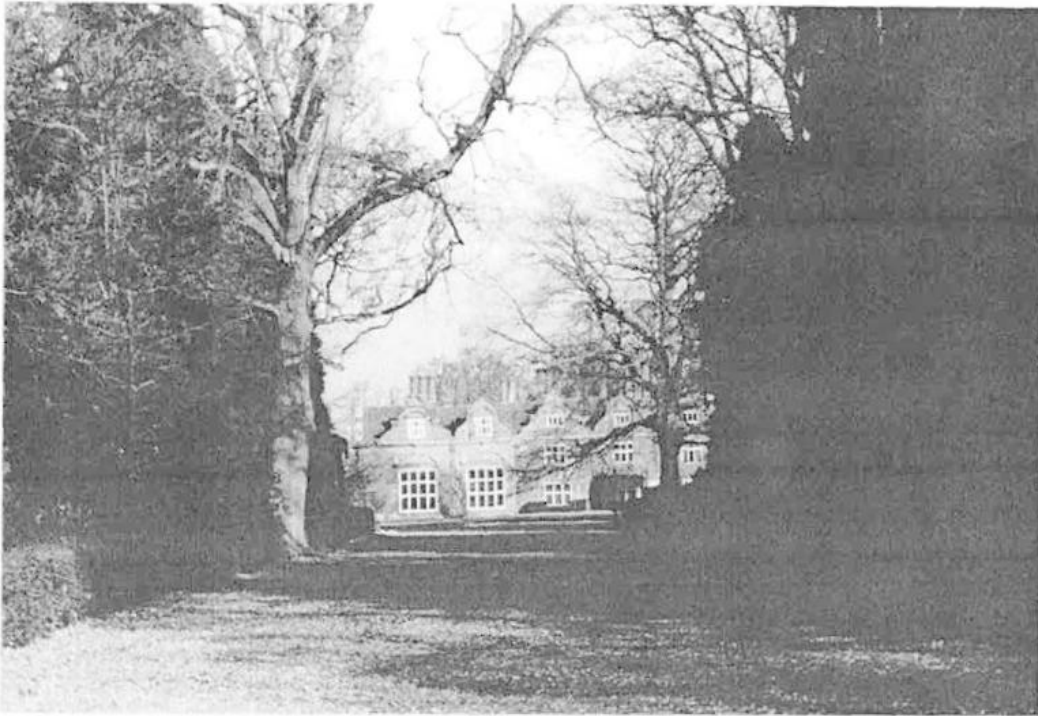


Fig. 16



Fig. 17

Fig. 18



Fig. 19





Fig. 20



Fig. 21