

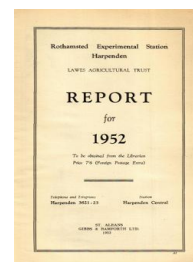
Thank you for using eradoc, a platform to publish electronic copies of the Rothamsted Documents. Your requested document has been scanned from original documents. If you find this document is not readable, or you suspect there are some problems, please let us know and we will correct that.



ROTHAMSTED
RESEARCH

Report for 1952

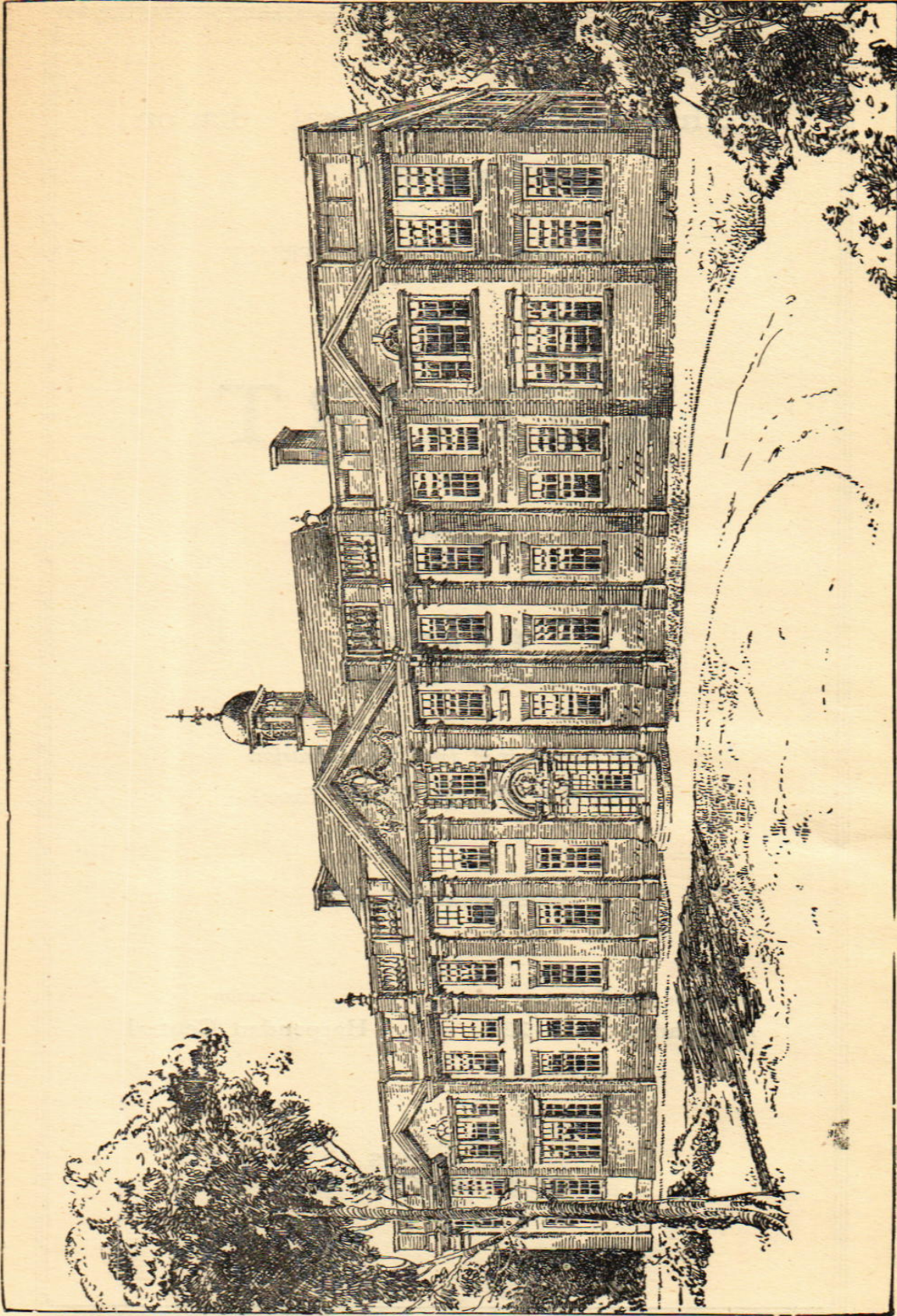
[Full Table of Content](#)



Rothamsted Laboratories, Erected 1914-1916

Rothamsted Research

Rothamsted Research (1953) *Rothamsted Laboratories, Erected 1914-1916* ; Report For 1952, pp 2 - 2 - DOI: <https://doi.org/10.23637/ERADOC-1-74>



THE ROTHAMSTED LABORATORIES FOR SOIL AND PLANT NUTRITION, ERECTED 1914-1915.