

Thank you for using eradoc, a platform to publish electronic copies of the Rothamsted Documents. Your requested document has been scanned from original documents. If you find this document is not readable, or you suspect there are some problems, please let us know and we will correct that.



ROTHAMSTED  
RESEARCH

# Collection of Plans for the Woburn Ley-arable Experiment

[Full Table of Content](#)

WOBURN ARABLE AND LEY ROTATIONS

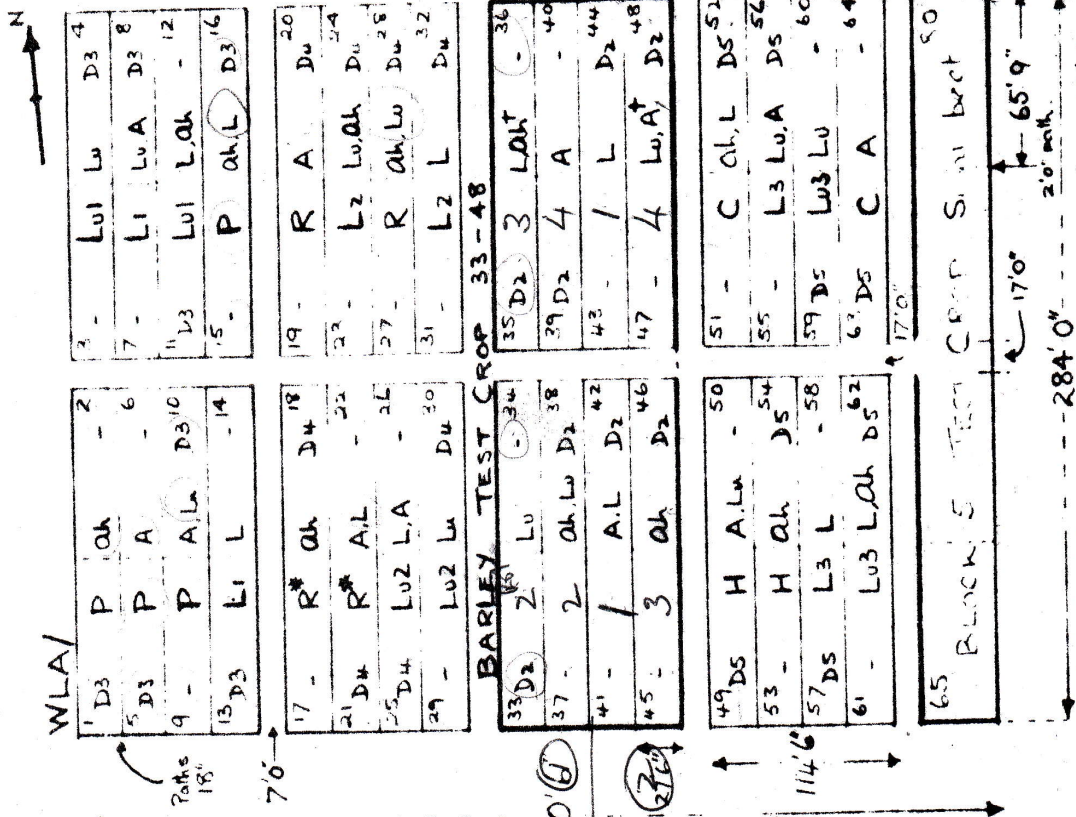
Treatment	Area (ac)	Year	Notes
1. 1st Year	1.0	1962	...
2. 2nd Year	1.0	1963	...
3. 3rd Year	1.0	1964	...
4. 4th Year	1.0	1965	...
5. 5th Year	1.0	1966	...
6. 6th Year	1.0	1967	...
7. 7th Year	1.0	1968	...
8. 8th Year	1.0	1969	...
9. 9th Year	1.0	1970	...
10. 10th Year	1.0	1971	...
11. 11th Year	1.0	1972	...
12. 12th Year	1.0	1973	...
13. 13th Year	1.0	1974	...
14. 14th Year	1.0	1975	...
15. 15th Year	1.0	1976	...
16. 16th Year	1.0	1977	...
17. 17th Year	1.0	1978	...
18. 18th Year	1.0	1979	...

## Woburn Ley-arable 1962

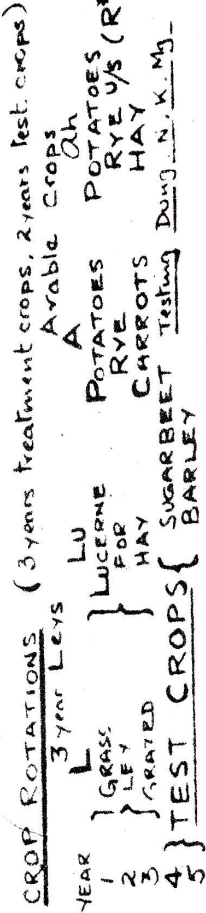
### Rothamsted Research

Rothamsted Research (1957-79) *Woburn Ley-arable 1962* ; Collection Of Plans For The Woburn Ley-Arable Experiment, pp 6 - 6

WOBURN Arable and Ley Rotations



SOLE TILLED V.L.A STACKYARD 1962



NOTE: A single crop rotation (1x Lu) is followed on 4 plots per block. Arable and Ley rotations alternate on remaining 4 plots (Lu, A).  
 D Dung at 15 ton per acre to sugar-beet, Da, Dv, Ds Dung residues in 2nd, 3rd, 4th yr  
 N 0.72 cut N as Nitrochak 21 K 0.9 cut K20 as nitrate of potash.  
 Mg 60 lb magnesium sulphate per acre

