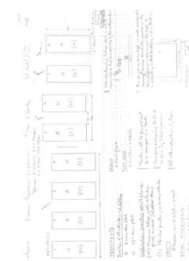


Thank you for using eradoc, a platform to publish electronic copies of the Rothamsted Documents. Your requested document has been scanned from original documents. If you find this document is not readable, or you suspect there are some problems, please let us know and we will correct that.



ROTHAMSTED
RESEARCH

Collection of Plans for the Woburn Erosion Reference Experiment



[Full Table of Content](#)

Woburn Erosion Reference Experiment 1993

Rothamsted Research

Rothamsted Research (1988-1998) *Woburn Erosion Reference Experiment 1993* ; Collection Of Plans For The Woburn Erosion Reference Experiment, pp 6 - 6

205

WOBURN W. wheat

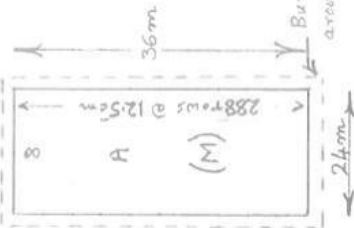
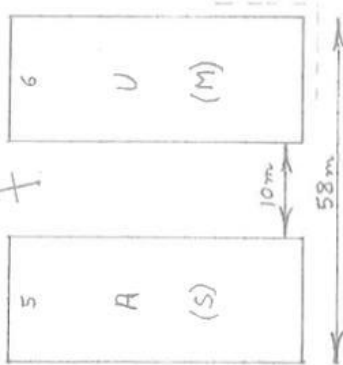
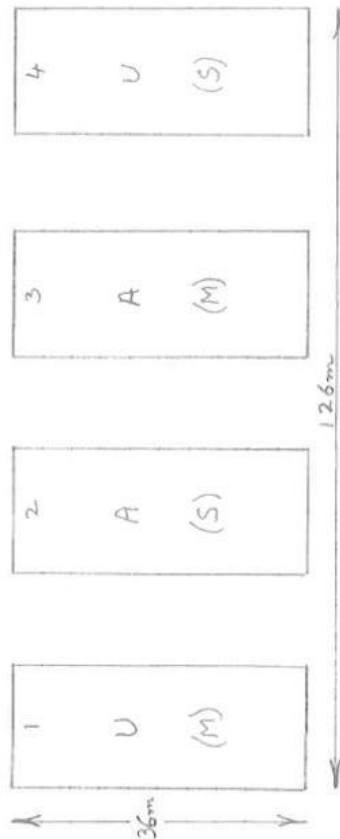
93/W/RN/20

EROSION REFERENCE EXPERIMENT

Sponsors J.A. Catt, R.P.C. Morgan, R.J. Rickson, P.D.R. Styles

6th Year

GREAT HILL II/III 1993



TREATMENTS

Direction of all cultivations and planting

- A Across the plots
- U Up and down the plots.

Cultivation practice

- M) Minimum tillage: 1989 potato haulm pulverized & retained
- : 1990 wheat straw chopped & retained to 10cm
- : 1991 barley straw
- : 1992 subsoil: tops retained
- : 1993 wheat straw chopped & retained to 10cm
- S) Standard practice : 1989 potato haulm removed
- : 1990 wheat straw baled & removed
- : 1991 barley straw
- : 1992 subsoil: tops removed
- : 1993 wheat straw baled & removed

VARIETY: ~~M~~ sown at 1g/ha on
BASAL MANURE: NPK Na Mg at 5FP.

DESIGN

2 blocks of 2x2

PLOT AREA

$24m \times 36m = 0.0864ha$

- || Tanks will be pumped out to a rain gun or a tanker
- || Pumping & cleaning tanks to be done by Silcock sponsors
- || ALL other operations by Farm

The relationship between plots is not as shown above but as indicated by the North points:-



ROAD

COMPLETE & RETURN

to F. E. S.

Sorsson 2 166 My HA Drilled 26 JAN 1993

2051 501 1993