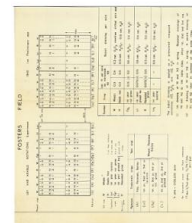


Thank you for using eradoc, a platform to publish electronic copies of the Rothamsted Documents. Your requested document has been scanned from original documents. If you find this document is not readable, or you suspect there are some problems, please let us know and we will correct that.



ROTHAMSTED
RESEARCH

Collection of Plans for the Fosters Ley-arable Experiment



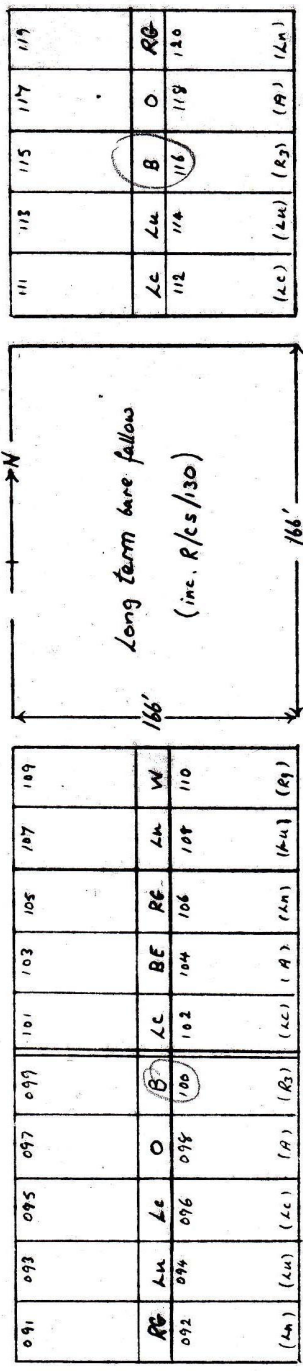
[Full Table of Content](#)

Fosters Ley-arable 1980-90

Rothamsted Research

Rothamsted Research (1949-1990) *Fosters Ley-arable 1980-90* ; Collection Of Plans For The Fosters Ley-Arable Experiment, pp 32 - 42

ROTHAMSTED LEY-ARABLE 32nd YEAR 80/R/RN/2 FOSTERS 1980
 SPONSORS: Blocks 1-4 R E Johnson, Blocks 5-12 D. B. Slope



CROPPING
 WHEAT (8 blocks 1+3, 5+7)
 Flanders Test N
 -, 1, 2, 3. None, 50, 100, 150 kgN/ha
 (None, 45, 85, 134 lbN/ac)

Y, S. Yield, Sample area.

NEW SEQUENCES (Blocks 6, 8, 9, 10, 11, 12)

- LH Lucerne vetch
- LC Grass/Clower
- RG Perennial Ryegrass
- W Wheat, Flanders
- BE Beans
- B Barley
- O Oats
- P Potatoes

111	112	113	114	115	116	117	118	119
LC	LC	B	O	RG				
(LC)	(LC)	(R2)	(A)	(LC)	(LC)	(A)	(LC)	(LC)

081	082	083	084	085	086	087	088	089
Y+S-Y+S-Y+S-Y+S	B	LC	B	LC	LC	P	LC	LC
(LC)	(R2)	(LC)	(R2)	(LC)	(LC)	(A)	(LC)	(LC)

061	062	063	064	065	066	067	068	069
Y+S-Y+S-Y+S	LC	RG	LC	LC	LC	AR	AR	A
(LC)	(LC)	(R2)	(LC)	(LC)	(LC)	(R2)	(R2)	(A)

071	072	073	074	075	076	077	078	079
LC	LC	LC	LC	P	B	LC	LC	LC
(LC)	(LC)	(LC)	(LC)	(A)	(R2)	(LC)	(LC)	(LC)

091	092	093	094	095	096	097	098	099
LC	LC	LC	LC	O	B	LC	BE	LC
(LC)	(LC)	(LC)	(LC)	(A)	(R2)	(LC)	(A)	(LC)

051	052	053	054	055	056	057	058	059
LC	LC	LC	LC	LC	LC	LC	LC	BE
(LC)	(LC)	(LC)	(LC)	(LC)	(LC)	(LC)	(LC)	(A)

041	042	043	044	045	046	047	048	049
Y+S-Y+S-Y+S-Y+S	LC	LC	LC	LC	LC	LC	LC	LC
(LC)	(LC)	(LC)	(LC)	(LC)	(LC)	(LC)	(LC)	(LC)

031	032	033	034	035	036	037	038	039
LC	LC	LC	LC	LC	LC	LC	LC	LC
(LC)	(LC)	(LC)	(LC)	(LC)	(LC)	(LC)	(LC)	(LC)

021	022	023	024	025	026	027	028	029
LC	LC	LC	LC	LC	LC	LC	LC	LC
(LC)	(LC)	(LC)	(LC)	(LC)	(LC)	(LC)	(LC)	(LC)

011	012	013	014	015	016	017	018	019
LC	LC	LC	LC	LC	LC	LC	LC	LC
(LC)	(LC)	(LC)	(LC)	(LC)	(LC)	(LC)	(LC)	(LC)

001	002	003	004	005	006	007	008	009
LC	LC	LC	LC	LC	LC	LC	LC	LC
(LC)	(LC)	(LC)	(LC)	(LC)	(LC)	(LC)	(LC)	(LC)

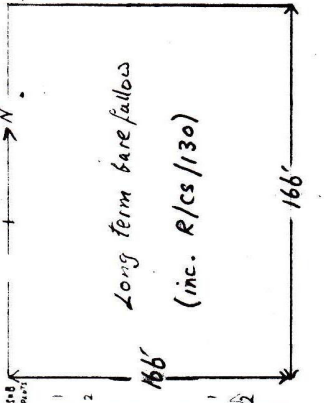
TREATMENT CROPS (Blocks 2+4)
 LH Lucerne
 LN Grass ley
 LC Grass/Clower/ley
 R Reseeded grass
 SB Sugar beet

NOTE: R3, R4 etc refers to year that reseeded (R) grass first under arable crop (1963, 1969 etc.)
 (F), (D): None, Dung (residual treatments); C, N None, N+K top dressed in spring and after each cut except the last.

Sponsors: Blocks 1-4 A. E. Johnston Blocks 5-12 D. B. Slope

111	113	115	117	119
LC	LC	B	P	RG
112	114	116	118	120
(LC)	(LC)	(R3)	(R)	(LC)

12 NEW SEQUENCES (2nd year)



071	073	075	077	079	081	083	085	087	089	091	093	095	097	099
RG	LC	LC	P	B	LC	RG	LA	AR	AR	LC	A	RG	LA	AR
092	094	096	098	100	102	104	106	108	110	112	114	116	118	120
(LN)	(LN)	(LC)	(R)	(R)	(LC)	(R)	(LC)	(LN)	(R)	(LC)	(R)	(LC)	(LN)	(R)

10 NEW SEQUENCES (2nd year) 11 WHEAT (1st test crop)

CROPPING

WHEAT (Blocks 1, 3, 5, 6, 7, 11)

Flanders Test N

1, 2, 3, None 50, 100, 150 kgN/ha
(None 45, 89, 134 kgN/ha)

Y, S, yield, sample areas.

Spans: 8 October

061	063	065	067	069	071	073	075	077	079	081	083	085	087	089
LC	RG	LA	AR	A	RG	LC	BE	W	LC	W	RG	LC	BE	LC
082	084	086	088	090	092	094	096	098	100	102	104	106	108	110
(LC)	(R)	(LC)	(R)	(R)	(LN)	(LC)	(R)	(R)	(R)	(R)	(LN)	(LC)	(R)	(R)

8 NEW SEQUENCES (3rd year) 9 NEW SEQUENCES (3rd year)

051	053	055	057	059	061	063	065	067	069	071	073	075	077	079
LC	AR	LC	RG	A	LC	RG	LA	AR	A	RG	LC	BE	W	LC
082	084	086	088	090	092	094	096	098	100	102	104	106	108	110
(R)	(R)	(LC)	(LN)	(R)	(LC)	(R)	(LC)	(R)	(R)	(LN)	(LC)	(R)	(R)	(R)

6 WHEAT (1st test crop)

001	003	005	007	009	011	013	015	017	019
LC	A	LC	LC	D	LN	LN	D	LC	LC
022	024	026	028	030	032	034	036	038	040
(D)	(F)	(F)	(F)	(F)	(F)	(F)	(F)	(F)	(F)

1 WHEAT (3rd test crop) 2 TREATMENT CROPS (3rd year)

NEW SEQUENCES (Blocks 8, 9, 10, 12)

LC Lucerne vetch
 LC Grass/clover
 RG perennial Ryegrass
 W W. Wheat, Flanders
 BE Beans
 B Barley
 P Potatoes

TREATMENT CROPS (Blocks 2, 4)

LC Lucerne
 LN Grass/ley
 LC Grass/clover/ley
 R Reseeded grass
 O Oats

021	023	025	027	029	031	033	035	037	039
LC	LN	A	LC	LC	LN	LN	LC	D	D
042	044	046	048	050	052	054	056	058	060
(D)	(F)	(F)	(F)	(F)	(F)	(F)	(F)	(F)	(F)

3 WHEAT (3rd test crop) 4 TREATMENT CROPS (3rd year) 5 WHEAT (2nd test crop)

001	003	005	007	009	011	013	015	017	019
LC	A	LC	LC	D	LN	LN	D	LC	LC
022	024	026	028	030	032	034	036	038	040
(D)	(F)	(F)	(F)	(F)	(F)	(F)	(F)	(F)	(F)

1 WHEAT (3rd test crop) 2 TREATMENT CROPS (3rd year)

001	003	005	007	009	011	013	015	017	019
LC	A	LC	LC	D	LN	LN	D	LC	LC
022	024	026	028	030	032	034	036	038	040
(D)	(F)	(F)	(F)	(F)	(F)	(F)	(F)	(F)	(F)

1 WHEAT (3rd test crop) 2 TREATMENT CROPS (3rd year)

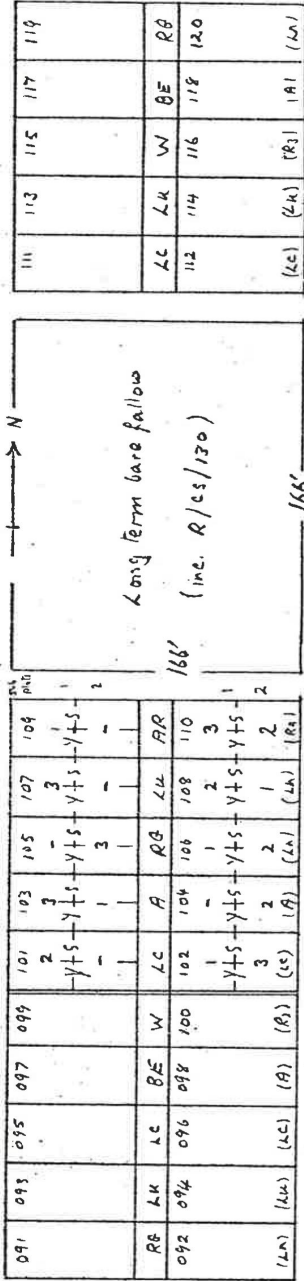
TREATMENT CROPS (Blocks 2, 4)

LC Lucerne
 LN Grass/ley
 LC Grass/clover/ley
 R Reseeded grass
 O Oats

NOTE: R₃, R₉ etc refers to year that reseeded (R) grass first under arable crop (1963, 1969 etc)
 (F), (D): None, F-I.M. (Residual treatments); C, N, None N+K top dressed in spring and after each block except the last

ROTHAMSTED LEY-ARABLE 34th YEAR 82/R/RN/2 FOSTERS 1982

Sponsors: Blocks 1-4 Agr. Education, Block 5-12 D.B. Slope



CROPPING

WHEAT (Blocks 5, 6, 7, 8, 9, 11.)

Flanders Test A

- 1, 2, 3. None, 50, 100, 150 kgN/ha (None, 45, 89, 134 lbN/ac)

Y, S. Yield, sample areas

NEW SEQUENCES

- LU Lucerne - Vetch
- LC Grass/Cllover
- RG Perennial Ryegrass
- W W. Wheat - Flanders
- BE Beans

TREATMENT CROPS

(Blocks 1-3)

- LU Lucerne
- LN Grass/Ley
- LC Grass/Cllover, Ley
- R Reseeded grass
- H 1 year Hay

10 NEW SEQUENCES (3rd year) 11 WHEAT (2nd test crop)

091	095	097	099	101	103	105	107	109	111	113	115	117	119	
RE	LU	LC	BE	W	LC	A	RG	LU	AR	LC	LU	W	BE	RG
092	094	096	098	100	102	104	106	108	110	112	114	116	118	120
(LN)	(LU)	(LC)	(A)	(R)	(C)	(A)	(LN)	(LU)	(R)	(LC)	(LU)	(R)	(A)	(LN)

12 NEW SEQUENCES (3rd year)

061	063	065	067	069	071	073	075	077	079	081	083	085	087	089
LC	RG	LU	AR	A	RG	LC	A	AR	LU	AR	RG	LC	A	LU
062	064	066	068	070	072	074	076	078	080	082	084	086	088	090
(LC)	(RG)	(LU)	(AR)	(A)	(LN)	(LC)	(A)	(R)	(LN)	(AR)	(LN)	(LC)	(A)	(LN)

6 WHEAT (2nd test crop)

001	003	005	007	009	011	013	015	017	019
LC	H	LU	LU	LN	LN	R	R	R	R
002	004	006	008	010	012	014	016	018	020
(LC)	(H)	(LU)	(LU)	(LN)	(LN)	(R)	(R)	(R)	(R)

1 TREATMENT CROPS (1st year) 2 POTATOES (1st test crop)

NOTE: R, R, etc. refers to year that reseeded (R) grass first under arable crop (1963, 69, etc.)

(F), (D). None, F, M (residual treatments), C, N, None NK top dressed in Spring and after each cut except the last

7 WHEAT (3rd test crop) 8 WHEAT (1st test crop) 9 WHEAT (1st test crop)

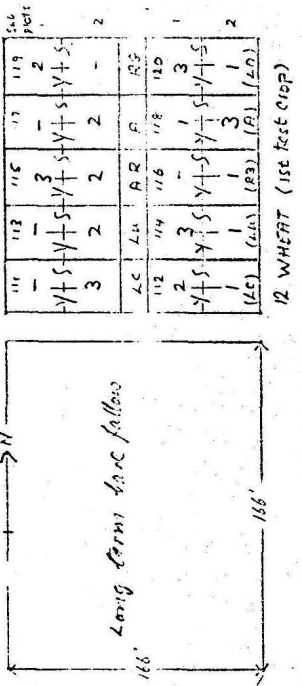
021	023	025	027	029	031	033	035	037	039	041	043	045	047	049
LC	LN	H	LC	BE	W	LC	LU	AR	LU	AR	LC	LU	W	BE
022	024	026	028	030	032	034	036	038	040	042	044	046	048	050
(LC)	(LN)	(H)	(LC)	(BE)	(W)	(LC)	(LU)	(AR)	(LU)	(AR)	(LC)	(LU)	(W)	(BE)

3 TREATMENT CROPS (1st year) 4 POTATOES (1st test crop) 5 WHEAT (1st test crop)

NOTE: R, R, etc. refers to year that reseeded (R) grass first under arable crop (1963, 69, etc.)

(F), (D). None, F, M (residual treatments), C, N, None NK top dressed in Spring and after each cut except the last

ROTHAMSTED KEY - ARABLE 35H YEAR 83/R/RN/2 FOSTERS 1983
 Sponsors: Blocks 1-4 R. E. Johnston. Blocks 5-12 D. B. Slope



10 WHEAT (1st test crop)

091	092	093	094	095	096	097	098	099	100	101	102	103	104	105	106	107	108	109	110
Y+S	Y+S	Y+S	Y+S	Y+S	Y+S	Y+S	Y+S	Y+S	Y+S	Y+S	Y+S	Y+S	Y+S	Y+S	Y+S	Y+S	Y+S	Y+S	Y+S
3	2	1	1	1	1	2	2	2	2	2	2	2	2	2	2	2	2	2	2
(L4)	(L4)	(L4)	(L4)	(L4)	(L4)	(L4)	(L4)	(L4)	(L4)	(L4)	(L4)	(L4)	(L4)	(L4)	(L4)	(L4)	(L4)	(L4)	(L4)

CROPPING
 WHEAT (Blocks 5, 6, 7, 8, 9, 10, 11, 12)
 Flanders Test N
 - 1, 2, 3, None, 50, 100, 150 kg N/ha
 (None, 45, 89, 134 lb N/ac)
 Y, S: Yield, Sample areas
 Sown on 11 November

11 WHEAT (3rd test crop)

061	062	063	064	065	066	067	068	069	070	071	072	073	074	075	076	077	078	079	080
Y+S	Y+S	Y+S	Y+S	Y+S	Y+S	Y+S	Y+S	Y+S	Y+S	Y+S	Y+S	Y+S	Y+S	Y+S	Y+S	Y+S	Y+S	Y+S	Y+S
3	2	1	1	1	1	2	2	2	2	2	2	2	2	2	2	2	2	2	2
(L4)	(L4)	(L4)	(L4)	(L4)	(L4)	(L4)	(L4)	(L4)	(L4)	(L4)	(L4)	(L4)	(L4)	(L4)	(L4)	(L4)	(L4)	(L4)	(L4)

TREATMENT CROPS (Blocks 1+3)
 L4 Lucerne
 L4 Grass ley
 L4 Grass clover ley
 R Reseeded ley
 SB Sugar beets

12 WHEAT (1st test crop)

111	112	113	114	115	116	117	118	119	120
Y+S	Y+S	Y+S	Y+S	Y+S	Y+S	Y+S	Y+S	Y+S	Y+S
3	2	2	2	2	2	2	2	2	2
(L4)	(L4)	(L4)	(L4)	(L4)	(L4)	(L4)	(L4)	(L4)	(L4)

6 WHEAT (3rd test crop)

001	002	003	004	005	006	007	008	009	010	011	012	013	014	015	016	017	018	019
Y+S	Y+S	Y+S	Y+S	Y+S	Y+S	Y+S	Y+S	Y+S	Y+S	Y+S	Y+S	Y+S	Y+S	Y+S	Y+S	Y+S	Y+S	Y+S
3	2	1	1	1	1	2	2	2	2	2	2	2	2	2	2	2	2	2
(L4)	(L4)	(L4)	(L4)	(L4)	(L4)	(L4)	(L4)	(L4)	(L4)	(L4)	(L4)	(L4)	(L4)	(L4)	(L4)	(L4)	(L4)	(L4)

Test Crops Blocks 2+4
 Wheat Flanders
 Sown on 19 Nov. 84

7 WHEAT (4th test crop)

021	022	023	024	025	026	027	028	029	030	031	032	033	034	035	036	037	038	039	040
Y+S	Y+S	Y+S	Y+S	Y+S	Y+S	Y+S	Y+S	Y+S	Y+S	Y+S	Y+S	Y+S	Y+S	Y+S	Y+S	Y+S	Y+S	Y+S	Y+S
3	2	1	1	1	1	2	2	2	2	2	2	2	2	2	2	2	2	2	2
(L4)	(L4)	(L4)	(L4)	(L4)	(L4)	(L4)	(L4)	(L4)	(L4)	(L4)	(L4)	(L4)	(L4)	(L4)	(L4)	(L4)	(L4)	(L4)	(L4)

8 WHEAT (2nd test crop)

041	042	043	044	045	046	047	048	049	050	051	052	053	054	055	056	057	058	059	060
Y+S	Y+S	Y+S	Y+S	Y+S	Y+S	Y+S	Y+S	Y+S	Y+S	Y+S	Y+S	Y+S	Y+S	Y+S	Y+S	Y+S	Y+S	Y+S	Y+S
3	2	2	2	2	2	2	2	2	2	2	2	2	2	2	2	2	2	2	2
(L4)	(L4)	(L4)	(L4)	(L4)	(L4)	(L4)	(L4)	(L4)	(L4)	(L4)	(L4)	(L4)	(L4)	(L4)	(L4)	(L4)	(L4)	(L4)	(L4)

9 WHEAT (2nd test crop)

061	062	063	064	065	066	067	068	069	070	071	072	073	074	075	076	077	078	079	080
Y+S	Y+S	Y+S	Y+S	Y+S	Y+S	Y+S	Y+S	Y+S	Y+S	Y+S	Y+S	Y+S	Y+S	Y+S	Y+S	Y+S	Y+S	Y+S	Y+S
3	2	1	1	1	1	2	2	2	2	2	2	2	2	2	2	2	2	2	2
(L4)	(L4)	(L4)	(L4)	(L4)	(L4)	(L4)	(L4)	(L4)	(L4)	(L4)	(L4)	(L4)	(L4)	(L4)	(L4)	(L4)	(L4)	(L4)	(L4)

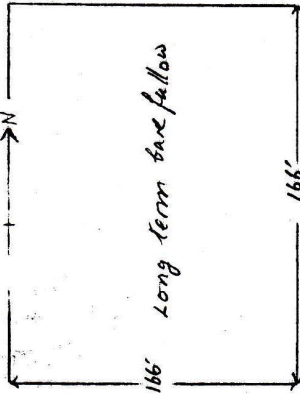
1 TREATMENT CROPS (2nd year)
 2 WHEAT (2nd test crop)
 3 TREATMENT CROPS (2nd year)
 4 WHEAT (2nd test crop)
 5 WHEAT (4th test crop)

NOTE: R3, R4 etc. refers to the year that grass first under arable crop (1963, 1969 etc.)
 (F), (D): None, FYM (residual treatments); C, N, None. NK top dressed in Spring and after each cut except the last.

ROTHAMSTED LEY-RARABLE 36th YEAR 24/R/RN/2 FOSTERS 1984

Sponsors: Blocks 1-4 A.E. Johnston, Blocks 6, 8, 9, 11 R. J. Gurney

111	112	113	114	115	116	117	118	119
SOWN SOLID UNIFORM N								
LC	LH	AR	A	RG				
112	114	116	118	120				
NO YIELDS								
(LC)	(LH)	(AR)	(A)	(RG)	(LN)			



091	093	095	097	099	101	103	105	107	109
SOWN SOLID UNIFORM N									
RB	LH	LC	A	AR	LC	A	RG	LH	AR
092	094	096	098	100	102	104	106	108	110
NO YIELDS									
(LN)	(LN)	(LC)	(A)	(AR)	(LC)	(A)	(LN)	(LN)	(AR)

12 WHEAT

061	063	065	067	069	071	073	075	077	079	081	083	085	087	089
SOWN SOLID UNIFORM N														
LC	RG	LH	AR	A	RG	LC	A	AR	LH	AR	RG	LC	A	LH
062	064	066	068	070	072	074	076	078	080	082	084	086	088	090
NO YIELDS														
(LC)	(RG)	(LH)	(AR)	(A)	(LN)	(LC)	(A)	(AR)	(LH)	(AR)	(LN)	(LC)	(A)	(LH)

9 WHEAT (3rd test crop)

021	023	025	027	029	031	033	035	037	039	041	043	045	047	049
SOWN SOLID UNIFORM N														
LH	LH	O	LC	///	LH	LC	///	///	A	LH	LC	RG	AR	A
022	024	026	028	030	032	034	036	038	040	042	044	046	048	050
NO YIELDS														
(LN)	(LN)	(O)	(LC)	(///)	(LN)	(LC)	(///)	(///)	(A)	(LN)	(LC)	(LN)	(AR)	(A)

3 TREATMENT CROPS (3rd year) 4 WHEAT (3rd test crop) 5 WHEAT

051	053	055	057	059	061	063	065	067	069
SOWN SOLID UNIFORM N									
LH	AR	LC	RG	A	LC	RG	LH	AR	A
052	054	056	058	060	062	064	066	068	070
NO YIELDS									
(LN)	(AR)	(LC)	(LN)	(A)	(LN)	(RG)	(LH)	(AR)	(A)

7 WHEAT

001	003	005	007	009	011	013	015	017	019
SOWN SOLID UNIFORM N									
LC	O	LH	///	///	LH	///	A	LC	LH
002	004	006	008	010	012	014	016	018	020
NO YIELDS									
(LN)	(O)	(LH)	(///)	(///)	(LN)	(///)	(A)	(LN)	(LH)

1 TREATMENT CROPS (3rd year) 2 WHEAT (3rd test crop)

CROPPING

W. WHEAT (Blocks 6, 8, 9, 11), sown 18 Oct 64

Flanders Test N

1, 2, 3. None 50, 100, 150 kgN/ha (None 45, 89, 134 lbN/ac)

Y, S yield, sample area

WHEAT (Blocks 5, 7, 10, 12)

Sown solid, uniform N, NO yields.

TREATMENT CROPS (Blocks 1 & 3)

LH lucerne

LC Grass ley

LH Grass clover ley

R Reseeded ley

O Oats

TEST CROPS (Blocks 2 & 4)

WHEAT Flanders

Sown 18 Oct 64

NOTE: R3, R9 etc. refers to the year that reseeded (R) grass first under arable crop (1963, 1969 etc.) (F), (D). None, F, M (residual treatments); C, N. None, N, K Top dressed in spring after each cut except the last.

1985

FOSTERS

37th YEAR

ROTHAMISTED LEY-FARABLE

85/R/RN/2

Sponsors: Blocks 1-4 A.E. Johnston, Blocks 8+9 R

CROPPING

W. Wheat blocks 8+9
 Flanders, sown at 100 lb/ha (100/ha) + 2 Normal-ly
 TEST N:
 - 1, 2, 3, None, 50, 100, 150 kg N/ha
 (None, 145, 89, 134 lb/ac)

Y, S, yield, sample area

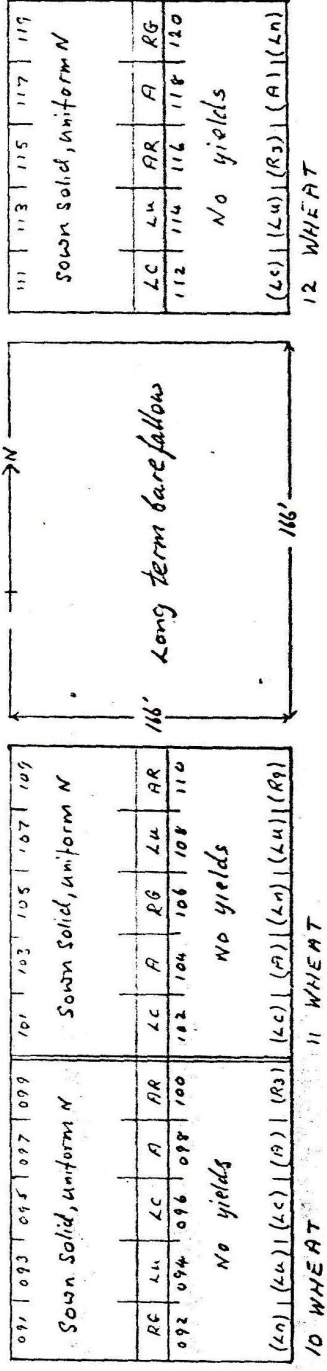
W. wheat blocks 5, 6, 7, 10, 11 + 12.
 Sown solid, uniform N, no yields. Sown
 at 100 lb/ha (100 lb/ha) on 5 Nov (5/11) + 12 Nov (6/11/12)

TREATMENT CROPS blocks 2+4
 LU lucerne
 LN Grass ley
 LC Grass/Clover ley
 R Reseeded grass
 H 1 year lay

TEST CROPS blocks 1+3

W. wheat
 Flanders, sown at 100 lb/ha
 (100 lb/ha) on 2 November
 NOTE: TEST CROP
 W. wheat replaces
 potatoes

// D.S. Jenkinson to
 cover some plots
 before Nitrogen
 application on
 blocks 1+3, and
 requires notice then
 and before harvest



081	063	065	067	069	071	073	075	077	079	081	083	085	087	089
Sown Solid, uniform N														
LC	RG	LC	AR	A	RG	LC	A	AR	LC	AR	RG	LC	A	LC
082	064	066	068	070	072	074	076	078	080	082	084	086	088	090
NO yields														
(LC)	(RG)	(LC)	(AR)	(A)	(RG)	(LC)	(A)	(AR)	(LC)	(AR)	(RG)	(LC)	(A)	(LC)

051	053	055	057	059
Sown Solid, uniform N				
LN	AR	LC	RG	A
052	054	056	058	060
NO yields				
(LN)	(AR)	(LC)	(RG)	(A)

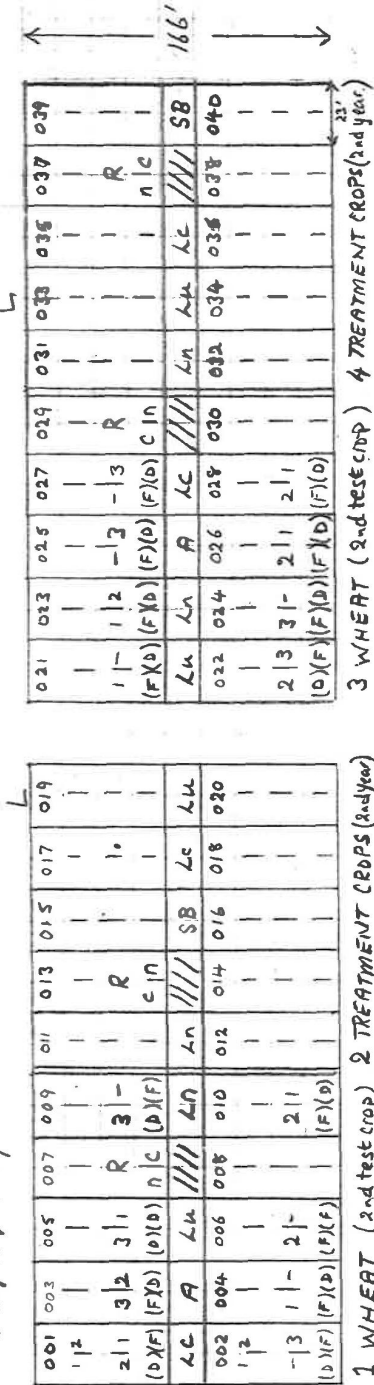
021	023	025	027	029	031	032	035	037	039	041	043	045	047	049
Sown solid, uniform N														
(F)(D)	(F)(D)	(F)(D)	(F)(D)	(F)(D)	(F)(D)	(F)(D)	(F)(D)	(F)(D)	(F)(D)	(F)(D)	(F)(D)	(F)(D)	(F)(D)	(F)(D)
LC	LN	A	LC	///	LN	LC	///	///	H	LC	LC	RG	AR	A
022	024	026	028	030	032	034	036	038	040	042	044	046	048	050
NO yields														
(D)(F)	(F)(D)	(F)(D)	(F)(D)	(F)(D)	(F)(D)	(F)(D)	(F)(D)	(F)(D)	(F)(D)	(F)(D)	(F)(D)	(F)(D)	(F)(D)	(F)(D)

001	003	005	007	009	011	013	015	017	019
Sown Solid, uniform N									
LC	A	LC	///	LN	LN	///	H	LC	LC
002	004	006	008	010	012	014	016	018	020
NO yields									
(D)(F)	(F)(D)	(F)(D)	(F)(D)	(F)(D)	(F)(D)	(F)(D)	(F)(D)	(F)(D)	(F)(D)

ROTHAMSTED KEY-ARABLE (MUSEUM PLOTS) 38th YEAR FOSTERS 1986

Sponsor: A. E. Johnston

86/R/RN/2



1 WHEAT (2nd test crop) 2 TREATMENT CROPS (2nd year) 3 WHEAT (2nd test crop) 4 TREATMENT CROPS (2nd year)

CROPPING

TREATMENT CROPS Blocks 2+4

- Lu Lucerne
- Ln Grass ley
- Lc Grass/Clower ley
- R Reseeded grass
- SB Sugar beet

TEST CROPS Blocks 1+3

- Winter Wheat, sown 10 October
- Avonon

Notes: (F), (D), None, FYM (residual treatments): c, n, None, NK top dressed in spring + after each cut except the last.

NOTE: Crop sequence blocks (old blocks 5-10) all to be sown solid, uniform N, no yields.

Variety Avonon

1987
Fors

Reduction in yield at harvest 39% year

Stations: A E International



TREATMENTS

Procedures 3.2.6. Treatment

crop:

- A A stubble
- Lc Clearfarming, no N
- Ln Green they will N
- Lh Lowland
- R. Pastured grass

Block 1 to 4 continue with
 that is a mixture of blue
 crop & wheat (A with 1987-
 number 14000000)

Block 5 to 12 last ranch
 effects in a barley, wheat
 - in which the farm
 half of each plot (area)

111	113	115	117	119
Lc	Ln	R	A	Ln

12. S. BARLEY 5th best crop

091	093	095	097	099	101	103	105	107	109
Ln	Lh	Lc	A	R	Lc	A	Ln	Ln	R

10. S. BARLEY 7th best crop

061	063	065	067	069	071	073	075	077	079	081	083	085	087	089
Lc	R	Ln	R	A	Ln	Lc	A	R	Ln	R	Ln	Lc	A	Ln

8. S. BARLEY 6th best crop

051	053	055	057	059
Ln	R	Lc	Ln	A

6. S. BARLEY 7th best crop

021	023	025	027	029	031	033	035	037	039	041	043	045	047	049
1	1	2	3	3	R			R						
(F)(D)	(F)(D)	(F)(D)	(F)(D)	(F)(D)	(D)(C)(N)			(D)(C)(N)						
Lc	Ln	A	Lc	Lc	Ln	Lc	Lc	Lc	O					
022	024	026	028	030	032	034	036	038	040					
2	3	3	2	1	2	1								
(D)(F)	(D)(F)	(D)(F)	(D)(F)	(D)(F)	(D)(F)	(D)(F)								

4. TREATMENT CROPS 3rd best crop

001	003	005	007	009	011	013	015	017	019
1	2	3	3	3	R				
(D)(F)	(D)(F)	(D)(F)	(D)(F)	(D)(F)	(D)(F)				
Lc	A	Lc	Lc	Ln	Ln	Lc	Lc	Lc	Ln
002	004	006	008	010	012	014	016	018	020
1	1	2		2	1				
(D)(F)	(D)(F)	(D)(F)	(D)(F)	(D)(F)	(D)(F)				

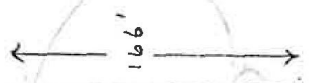
1. WHEAT 3rd best crop

9. S. BARLEY 6th best crop

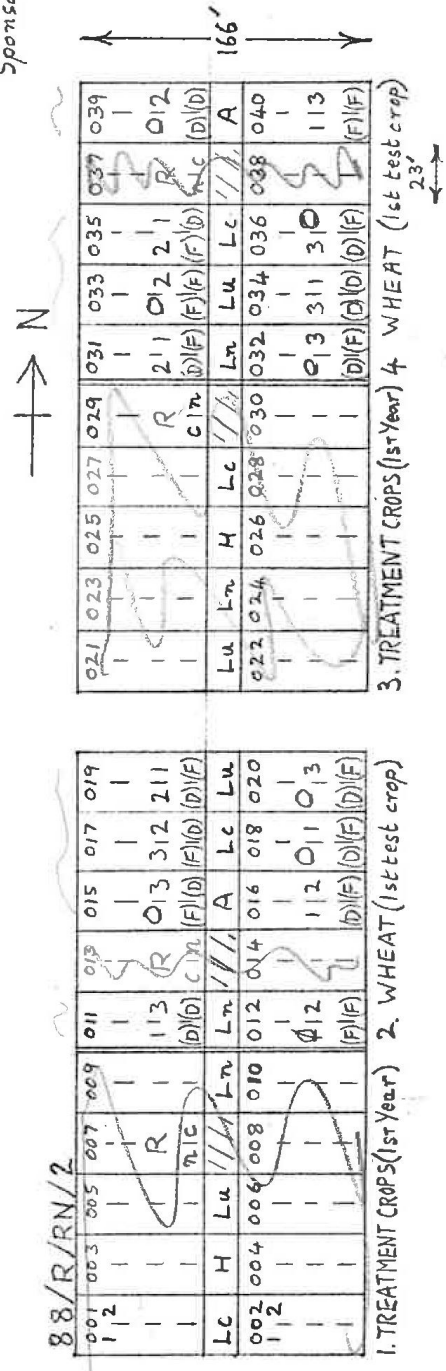
7. S. BARLEY 8th best crop

2. TREATMENT CROPS 3rd best crop

3. WHEAT 3rd best crop



ROTHAMSTED LEY ARABLE (MUSEUM PLOTS)
 40TH YEAR
 FOSTERS 1988
 Sponsor: A.E. Johnston



CROPPING

TREATMENT CROPS blocks 1 & 3 TEST CROPS blocks 2 & 4 N TREATMENTS TO WHEAT.

- Lu Lucerne
 - Ln Grass Ley
 - Lc Grass/clover/ley
 - R Reseeded grass
 - H 1 year Hay
- Winter Wheat: Avalon,
 sown, 5 Oct, 87.
- N TREATMENTS TO WHEAT
- 1 None
 - 2 50 Kg N ha⁻¹
 - 3 100 ..
 - 3 150 ..

Notes: (F), (D) : None, FYM (residual treatments).
 C, n : None, NK top dressed in Spring & after each cut except the last.

ROTHAMSTED LEV ARABLE (MUSEUM PLOTS) 41ST YEAR 1989 10
 FOSTERS
 Sponsor: A.E. Johnston, P.R. Poulton

89/R/RN/2

001	003	005	007	009	011	013	015	017	019
12									
		R			113	R	-13	312	211
		n/c			(D)(F)	C/n	(F)(D)	(F)(D)	(D)(F)
Lc	Sb	Lu	///	Ln	Ln	///	A	Lc	Lu
002	004	006	008	010	012	014	016	018	020
12									
					-12		112	-11	-13
					(F)(F)		(D)(F)	(D)(F)	(D)(F)

1. TREATMENT CROPS (2nd Year) 2. WHEAT (2nd test crop)

021	023	025	027	029	031	033	035	037	039
				R	211	211	211	R	-12
				C/n	(D)(F)	(F)(F)	(F)(D)	n/c	(D)(D)
Lu	Ln	Sb	Lc	///	Ln	Lu	Lc	///	A
022	024	026	028	030	032	034	036	038	040
					-13	311	311		113
					(D)(F)	(D)(D)	(D)(F)		(F)(F)

3. TREATMENT CROPS (2nd Year) 4. WHEAT (2nd test crop)

CROPPING

TREATMENT CROPS blocks 123 TEST CROPS blocks 204 N TREATMENTS TO WHEAT.

- Lu Lucerne
 - Ln Grass Ley
 - Lc Grass/clover Ley
 - R Reseeded grass
 - Sb Sugar beet
- Winter Wheat: Avalon, sown: 27 Oct
- None
 - 1 50 kg N ha⁻¹
 - 2 100 ..
 - 3 150 ..

Notes: (F), (D) : None, FYM (residual treatments).
 C, n : None, NK top dressed in Spring or after each cut except the last.

10

ROTHAMSTED LEY ARABLE (MUSEUM PLOTS)
 42nd YEAR
 FOSTERS 1990
 Sponsor: P.R. Paulston



90 R/RN/2	001	003	005	007	009	011	013	015	017	019	021	023	025	027	029	031	033	035	037	039
	1 2			R			R	-13	312	211					R	2 1 1	-12	2 1	R	-12
				n/c		(D)(D)	c/n	(F)(D)	(F)(D)	(D)(F)					c/n	(D)(F)	(F)(F)	(F)(D)	n/c	(D)(D)
	Lc	D	Lu	///	Ln	Ln	///	A	Lc	Lu	Lu	Ln	O	Lc	///	Ln	Lu	Lc	///	A
	002	004	006	008	010	012	014	016	018	020	022	024	026	028	030	032	034	036	038	040
	1 2					-12		112	-11	-13						-13	3 1 1	3 1 -		1 1 3
						(F)(F)		(D)(F)	(D)(F)	(D)(F)						(D)(F)	(D)(D)	(D)(F)		(F)(F)

1. TREATMENT CROPS (2nd Year) 2. WHEAT (3rd test crop)
 3. TREATMENT CROPS (3rd Year) 4. WHEAT (3rd test crop)

CROPPING

TREATMENT CROPS blocks 1 & 3

- Lu Lucerne
- Ln Grass Ley
- Lc Grass/clover/ley
- R Reseeded grass
- O Oats

TEST CROPS blocks 2 & 4

Winter Wheat; Avalon
 sown: 4 Oct

N TREATMENTS TO WHEAT.

- None
- 1 50 Kg N ha⁻¹
- 2 100 ..
- 3 150 ..

Notes: (F), (D) : None, FYM (residual treatments).
 C, n : None, NK top dressed in Spring & after each cut except the last.